

Product datasheet for **TA384802S**

MRPS26 Rabbit Monoclonal Antibody [Clone ID: R01-2D6]

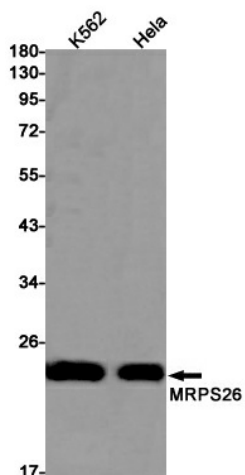
Product data:

Product Type:	Primary Antibodies
Clone Name:	R01-2D6
Applications:	IF, WB
Recommended Dilution:	WB: 1/1000 ICC/IF: 1/50
Reactivity:	Human
Host:	Rabbit
Isotype:	IgG
Clonality:	Monoclonal
Immunogen:	Recombinant protein of human MRPS26
Formulation:	50mM Tris-Glycine(pH 7.4), 0.15M NaCl, 40% Glycerol, 0.01% Sodium azide and 0.05% BSA
Concentration:	lot specific
Purification:	Affinity Purified
Conjugation:	Unconjugated
Storage:	Store at 4°C short term. Aliquot and store at -20°C long term. Avoid freeze/thaw cycles.
Stability:	1 year
Predicted Protein Size:	Calculated MW: 24 kDa; Observed MW: 24 kDa
Gene Name:	mitochondrial ribosomal protein S26
Database Link:	Entrez Gene 64949 Human Q9BYN8
Background:	Swiss-Prot Acc.Q9BYN8.28S ribosomal protein S26, mitochondrial
Synonyms:	C20orf193; dj534B8.3; GI008; MRP-S13; MRP-S26; MRPS13; NY-BR-87; RPMS13; S13mt; S26mt

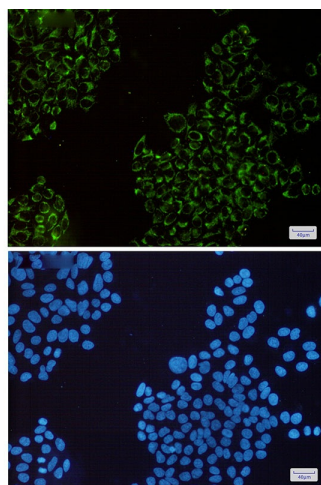


[View online »](#)

Product images:



Western blot analysis of MRPS26 in K562, HeLa lysates using MRPS26 antibody.



Immunocytochemistry analysis of MRPS26(green) in HeLa using MRPS26 antibody, and DAPI(blue)