

Product datasheet for **TA384799M**

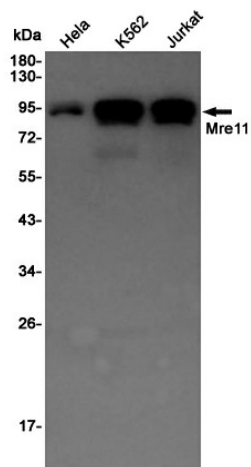
MRE11 Rabbit Polyclonal Antibody

Product data:

Product Type:	Primary Antibodies
Applications:	IHC, WB
Recommended Dilution:	WB: 1/1000-1/5000 IHC: 1/20-1/50
Reactivity:	Human
Host:	Rabbit
Isotype:	IgG
Clonality:	Polyclonal
Immunogen:	A synthetic peptide of human Mre11
Formulation:	50mM Tris-Glycine(pH 7.4), 0.15M NaCl, 40% Glycerol, 0.01% Sodium azide and 0.05% BSA
Concentration:	lot specific
Purification:	Affinity Purified
Conjugation:	Unconjugated
Storage:	Store at 4°C short term. Aliquot and store at -20°C long term. Avoid freeze/thaw cycles.
Stability:	1 year
Predicted Protein Size:	Calculated MW: 81 kDa; Observed MW: 81 kDa
Gene Name:	MRE11 homolog A, double strand break repair nuclease
Database Link:	Entrez Gene 4361 Human P49959
Background:	Swiss-Prot Acc.P49959.
Synonyms:	ATLD; HNGS1; MRE11; MRE11B



[View online »](#)

Product images:


Western blot detection of Mre11 in HeLa, K562, Jurkat cell lysates using Mre11 Rabbit pAb (1:1000 diluted). Predicted band size: 81 kDa. Observed band size: 81 kDa.