

Product datasheet for **TA384798**

MRE11 Rabbit Polyclonal Antibody

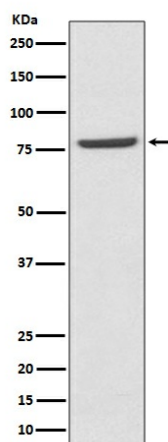
Product data:

Product Type:	Primary Antibodies
Applications:	IHC, WB
Recommended Dilution:	WB: 1/500-1/1000 IHC: 1/50-1/200
Reactivity:	Human, Mouse, Rat
Host:	Rabbit
Isotype:	IgG
Clonality:	Polyclonal
Immunogen:	A synthesized peptide derived from human Mre11
Formulation:	Rabbit IgG in phosphate buffered saline , pH 7.4, 150mM NaCl, 0.02% sodium azide and 50% glycerol.
Concentration:	lot specific
Purification:	Affinity Chromatography
Conjugation:	Unconjugated
Storage:	Store at 4°C short term. Aliquot and store at -20°C long term. Avoid freeze/thaw cycles.
Stability:	1 year
Predicted Protein Size:	81kDa
Gene Name:	MRE11 homolog A, double strand break repair nuclease
Database Link:	Entrez Gene 4361 Human P49959
Background:	Swiss-Prot Acc.P49959.DNA double-strand breaks are generated by ionizing radiation and endogenously produced radicals, and they often are repaired through the RAD52 homologous recombination pathway. The complex possesses single-strand endonuclease activity and double-strand-specific 3'-5' exonuclease activity, which are provided by MRE11A. RAD50 may be required to bind DNA ends and hold them in close proximity.
Synonyms:	ATLD; HNGS1; MRE11; MRE11B



[View online »](#)

Product images:



Western blot analysis of Mre11 in K562 lysates using Mre11 antibody.