

## Product datasheet for TA384792M

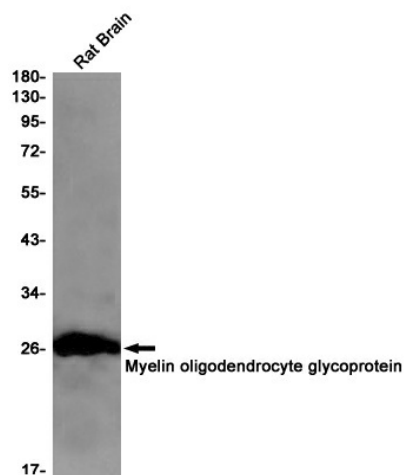
### Myelin oligodendrocyte glycoprotein (MOG) Rabbit Monoclonal Antibody [Clone ID: R04-4K8]

#### Product data:

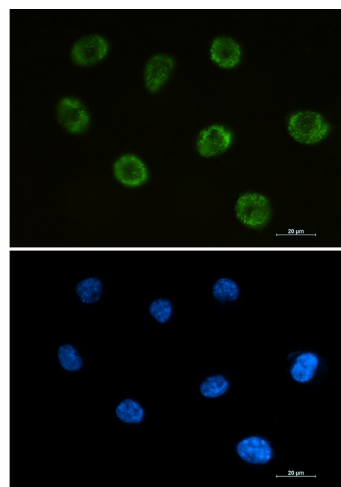
Product Type:	Primary Antibodies
Clone Name:	R04-4K8
Applications:	IF, WB
Recommended Dilution:	WB: 1/1000-1/5000 ICC/IF: 1/100-1/500
Reactivity:	Rat
Host:	Rabbit
Isotype:	IgG
Clonality:	Monoclonal
Immunogen:	A synthetic peptide of human Myelin oligodendrocyte glycoprotein
Formulation:	50mM Tris-Glycine(pH 7.4), 0.15M NaCl, 40% Glycerol, 0.01% Sodium azide and 0.05% BSA
Concentration:	lot specific
Purification:	Affinity Purified
Conjugation:	Unconjugated
Storage:	Store at 4°C short term. Aliquot and store at -20°C long term. Avoid freeze/thaw cycles.
Stability:	1 year
Predicted Protein Size:	Calculated MW: 28 kDa; Observed MW: 28 kDa
Gene Name:	myelin oligodendrocyte glycoprotein
Database Link:	<a href="#">Q16653</a>
Background:	Swiss-Prot Acc.Q16653.Mediates homophilic cell-cell adhesion . Minor component of the myelin sheath. May be involved in completion and/or maintenance of the myelin sheath and in cell-cell communication.
Synonyms:	MGC26137; MOGIG2


[View online »](#)

## Product images:



Western blot analysis of Myelin oligodendrocyte glycoprotein in rat Brain lysates using Myelin oligodendrocyte glycoprotein antibody.



Immunocytochemistry analysis of MOG (green) in SH-SY5Y using MOG antibody, and DAPI (blue).