

Product datasheet for **TA384791**

Myelin oligodendrocyte glycoprotein (MOG) Rabbit Polyclonal Antibody

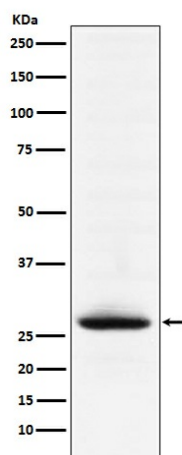
Product data:

Product Type:	Primary Antibodies
Applications:	IF, IHC, WB
Recommended Dilution:	WB: 1/500-1/2000 IHC: 1/100-1/500 ICC/IF: 1/100-1/500
Reactivity:	Human, Mouse, Rat
Host:	Rabbit
Isotype:	IgG
Clonality:	Polyclonal
Immunogen:	A synthesized peptide derived from human Myelin oligodendrocyte glycoprotein
Formulation:	Rabbit IgG in phosphate buffered saline , pH 7.4, 150mM NaCl, 0.02% sodium azide and 50% glycerol.
Concentration:	lot specific
Purification:	Affinity Chromatography
Conjugation:	Unconjugated
Storage:	Store at 4°C short term. Aliquot and store at -20°C long term. Avoid freeze/thaw cycles.
Stability:	1 year
Predicted Protein Size:	28kDa
Gene Name:	myelin oligodendrocyte glycoprotein
Database Link:	Entrez Gene 4340 Human Q16653
Background:	Swiss-Prot Acc.Q16653.Mediates homophilic cell-cell adhesion (By similarity). Minor component of the myelin sheath. May be involved in completion and/or maintenance of the myelin sheath and in cell-cell communication.
Synonyms:	MGC26137; MOGIG2



[View online »](#)

Product images:



Western blot analysis of Myelin oligodendrocyte glycoprotein in mouse brain lysates using MOG antibody.