

## Product datasheet for **TA384790M**

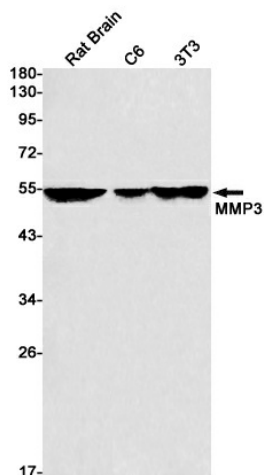
### **MMP3 Rabbit Monoclonal Antibody [Clone ID: R04-8G6]**

#### **Product data:**

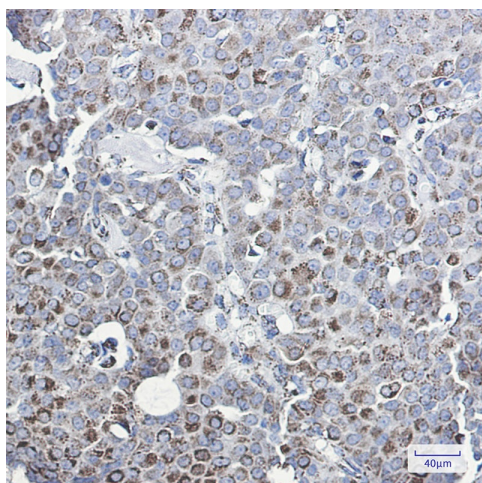
Product Type:	Primary Antibodies
Clone Name:	R04-8G6
Applications:	IHC, WB
Recommended Dilution:	WB: 1/1000-1/5000 IHC: 1/20
Reactivity:	Human, Mouse, Rat
Host:	Rabbit
Isotype:	IgG
Clonality:	Monoclonal
Immunogen:	A synthetic peptide of human MMP3
Formulation:	50mM Tris-Glycine(pH 7.4), 0.15M NaCl, 40% Glycerol, 0.01% Sodium azide and 0.05% BSA
Concentration:	lot specific
Purification:	Affinity Purified
Conjugation:	Unconjugated
Storage:	Store at 4°C short term. Aliquot and store at -20°C long term. Avoid freeze/thaw cycles.
Stability:	1 year
Predicted Protein Size:	Calculated MW: 54 kDa; Observed MW: 54 kDa
Gene Name:	matrix metalloproteinase 3
Database Link:	<a href="#">Entrez Gene 4314 Human P08254</a>
Background:	Swiss-Prot Acc.P08254.Can degrade fibronectin, laminin, gelatins of type I, III, IV, and V; collagens III, IV, X, and IX, and cartilage proteoglycans. Activates procollagenase.
Synonyms:	CHDS6; MGC126102; MGC126103; MGC126104; MMP-3; proteoglycanase; SL-1; STMY; STMY1; STR1; transin-1


[View online »](#)

## Product images:



Western blot analysis of MMP3 in rat Brain, C6, 3T3 lysates using MMP3 antibody.



Immunohistochemistry analysis of paraffin-embedded Human breast cancer using MMP3 antibody. High-pressure and temperature Sodium Citrate pH 6.0 was used for antigen retrieval.