

## Product datasheet for **TA384789M**

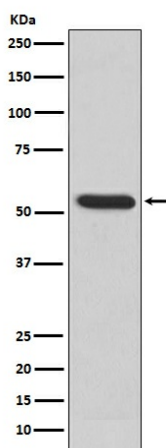
### MMP3 Rabbit Polyclonal Antibody

#### Product data:

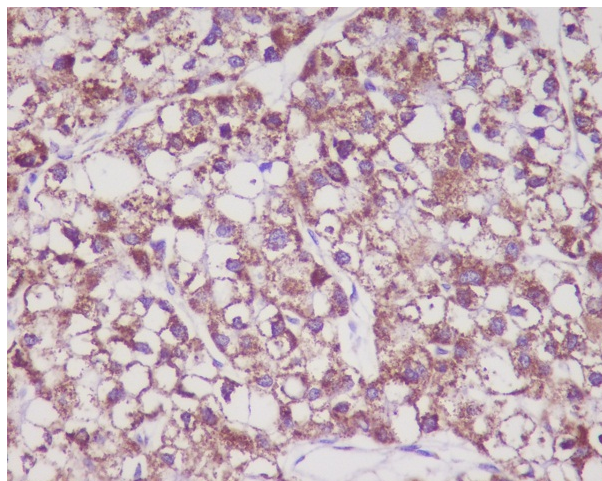
|                         |   |
|-------------------------|---|
| Product Type:           | Primary Antibodies  |
| Applications:           | IF, IHC, WB   |
| Recommended Dilution:   | WB: 1/500-1/2000<br>IHC: 1/50-1/200<br>ICC/IF: 1/50-1/200   |
| Reactivity:             | Human, Mouse, Rat   |
| Host:                   | Rabbit  |
| Isotype:                | IgG   |
| Clonality:              | Polyclonal  |
| Immunogen:              | A synthesized peptide derived from human MMP3   |
| Formulation:            | Rabbit IgG in phosphate buffered saline , pH 7.4, 150mM NaCl, 0.02% sodium azide and 50% glycerol.  |
| Concentration:          | lot specific  |
| Purification:           | Affinity Chromatography   |
| Conjugation:            | Unconjugated  |
| Storage:                | Store at 4°C short term. Aliquot and store at -20°C long term. Avoid freeze/thaw cycles.  |
| Stability:              | 1 year  |
| Predicted Protein Size: | 50kDa   |
| Gene Name:              | matrix metalloproteinase 3  |
| Database Link:          | <a href="#">Entrez Gene 4314 Human P08254</a>   |
| Background:             | Swiss-Prot Acc.P08254.MMP3 Can degrade fibronectin, laminin, gelatins of type I, III, IV, and V; collagens III, IV, X, and IX, and cartilage proteoglycans. Activates procollagenase. Belongs to the peptidase M10A family. |
| Synonyms:               | CHDS6; MGC126102; MGC126103; MGC126104; MMP-3; proteoglycanase; SL-1; STMY; STMY1; STR1; transin-1  |


[View online »](#)

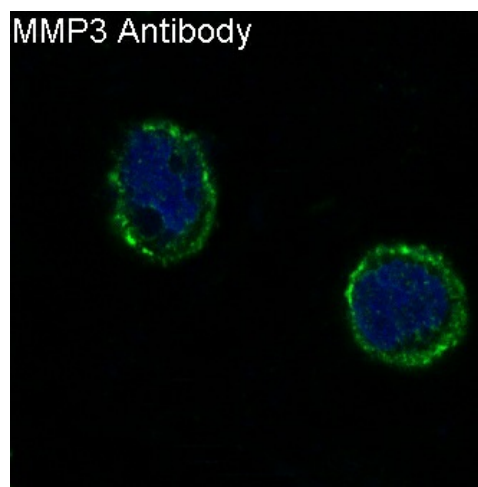
## Product images:



Western blot analysis of MMP3 in MMP3 recombinant protein using MMP3 antibody.



Immunohistochemistry analysis of paraffin-embedded Human liver cancer using MMP3 antibody. High-pressure and temperature Sodium Citrate pH 6.0 was used for antigen retrieval.



Immunofluorescence analysis of MMP3 in HeLa using MMP3 antibody.