

## Product datasheet for **TA384789**

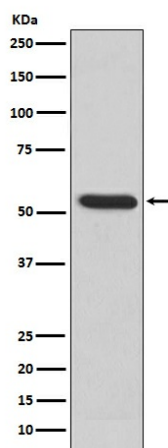
### MMP3 Rabbit Polyclonal Antibody

#### Product data:

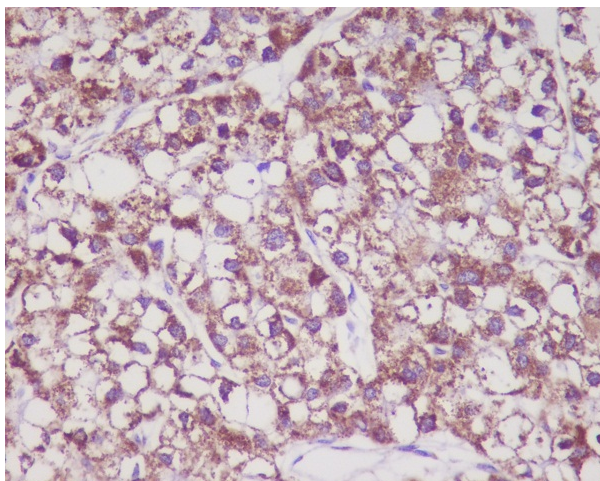
Product Type:	Primary Antibodies
Applications:	IF, IHC, WB
Recommended Dilution:	WB: 1/500-1/2000 IHC: 1/50-1/200 ICC/IF: 1/50-1/200
Reactivity:	Human, Mouse, Rat
Host:	Rabbit
Isotype:	IgG
Clonality:	Polyclonal
Immunogen:	A synthesized peptide derived from human MMP3
Formulation:	Rabbit IgG in phosphate buffered saline , pH 7.4, 150mM NaCl, 0.02% sodium azide and 50% glycerol.
Concentration:	lot specific
Purification:	Affinity Chromatography
Conjugation:	Unconjugated
Storage:	Store at 4°C short term. Aliquot and store at -20°C long term. Avoid freeze/thaw cycles.
Stability:	1 year
Predicted Protein Size:	50kDa
Gene Name:	matrix metalloproteinase 3
Database Link:	<a href="#">Entrez Gene 4314 Human P08254</a>
Background:	Swiss-Prot Acc.P08254.MMP3 Can degrade fibronectin, laminin, gelatins of type I, III, IV, and V; collagens III, IV, X, and IX, and cartilage proteoglycans. Activates procollagenase. Belongs to the peptidase M10A family.
Synonyms:	CHDS6; MGC126102; MGC126103; MGC126104; MMP-3; proteoglycanase; SL-1; STMY; STMY1; STR1; transin-1



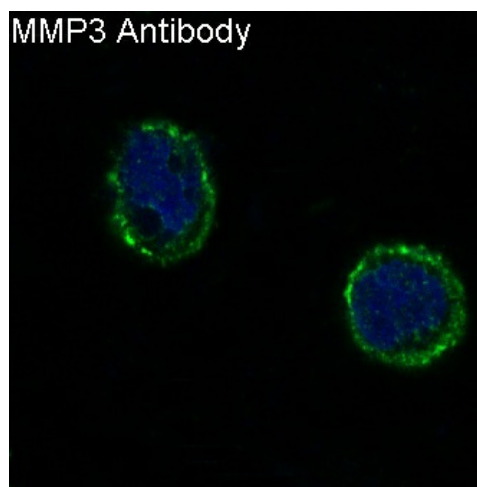
[View online »](#)

**Product images:**

Western blot analysis of MMP3 in MMP3 recombinant protein using MMP3 antibody.



Immunohistochemistry analysis of paraffin-embedded Human liver cancer using MMP3 antibody. High-pressure and temperature Sodium Citrate pH 6.0 was used for antigen retrieval.



Immunofluorescence analysis of MMP3 in HeLa using MMP3 antibody.