

## Product datasheet for **TA384788S**

### MMP3 Rabbit Polyclonal Antibody

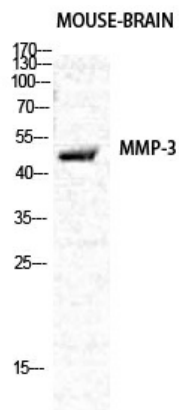
#### Product data:

Product Type:	Primary Antibodies
Applications:	ELISA, IF, IHC, WB
Recommended Dilution:	WB: 1/500-1/2000 IHC: 1/100-1/300 IF: 1/200-1/1000 ELISA: 1/10000
Reactivity:	Human, Mouse, Rat
Host:	Rabbit
Isotype:	IgG
Clonality:	Polyclonal
Immunogen:	The antiserum was produced against synthesized peptide derived from human MMP-3. AA range:421-470
Formulation:	Liquid in PBS containing 50% glycerol, 0.5% BSA and 0.02% sodium azide, pH 7.3.
Concentration:	lot specific
Purification:	Affinity Chromatography
Conjugation:	Unconjugated
Storage:	Store at 4°C short term. Aliquot and store at -20°C long term. Avoid freeze/thaw cycles.
Stability:	1 year
Predicted Protein Size:	Observed MW (kDa):53
Gene Name:	matrix metalloproteinase 3
Database Link:	<a href="#">Entrez Gene 4314 Human P08254</a>
Background:	Swiss-Prot Acc.P08254.Can degrade fibronectin, laminin, gelatins of type I, III, IV, and V; collagens III, IV, X, and IX, and cartilage proteoglycans. Activates procollagenase.
Synonyms:	CHDS6; MGC126102; MGC126103; MGC126104; MMP-3; proteoglycanase; SL-1; STMY; STMY1; STR1; transin-1

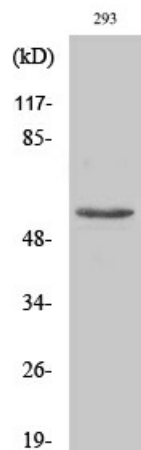


[View online »](#)

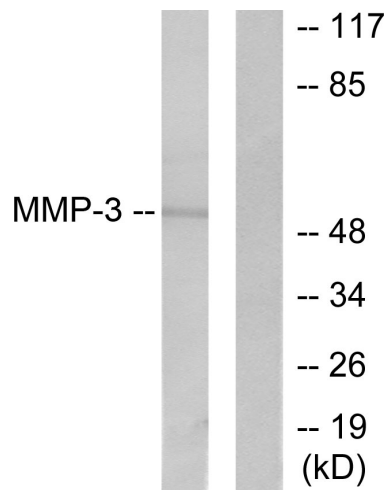
## Product images:



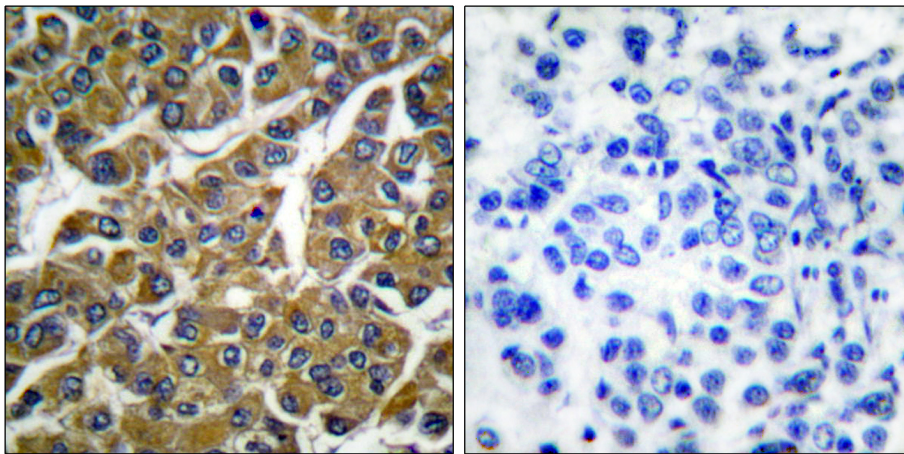
Western blot analysis of MMP3 in various lysates using MMP3 antibody.



Western blot analysis of MMP3 in 293 lysates using MMP3 antibody.



Western blot analysis of MMP3 in 293 lysates using MMP3 antibody. The lane on the right is blocked with the synthesized peptide.



Immunohistochemistry analysis of paraffin-embedded Human breast carcinoma tissue using MMP3 antibody. High-pressure and temperature Sodium Citrate pH 6.0 was used for antigen retrieval. Sample with blocking peptide on the right.