

## Product datasheet for **TA384787S**

### **MMP12 Rabbit Monoclonal Antibody [Clone ID: R03-2B9]**

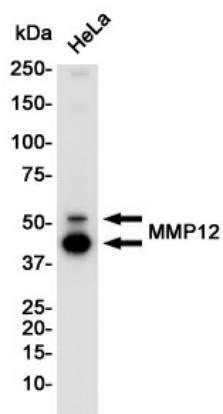
#### **Product data:**

<b>Product Type:</b>	Primary Antibodies
<b>Clone Name:</b>	R03-2B9
<b>Applications:</b>	IP, WB
<b>Recommended Dilution:</b>	WB: 1/1000 IP: 1/20
<b>Reactivity:</b>	Human, Rat, Hamster
<b>Host:</b>	Rabbit
<b>Isotype:</b>	IgG
<b>Clonality:</b>	Monoclonal
<b>Immunogen:</b>	A synthetic peptide of human MMP12
<b>Formulation:</b>	50mM Tris-Glycine(pH 7.4), 0.15M NaCl, 40% Glycerol, 0.01% Sodium azide and 0.05% BSA
<b>Concentration:</b>	lot specific
<b>Purification:</b>	Affinity Purified
<b>Conjugation:</b>	Unconjugated
<b>Storage:</b>	Store at 4°C short term. Aliquot and store at -20°C long term. Avoid freeze/thaw cycles.
<b>Stability:</b>	1 year
<b>Predicted Protein Size:</b>	Calculated MW: 54 kDa; Observed MW: 54,45 kDa
<b>Gene Name:</b>	matrix metalloproteinase 12
<b>Database Link:</b>	<a href="#">Entrez Gene 4321 Human P39900</a>
<b>Background:</b>	Swiss-Prot Acc.P39900.May be involved in tissue injury and remodeling. Has significant elastolytic activity. Can accept large and small amino acids at the P1' site, but has a preference for leucine. Aromatic or hydrophobic residues are preferred at the P1 site, with small hydrophobic residues (preferably alanine) occupying P3.
<b>Synonyms:</b>	HME; ME; MGC138506; MME; MMP-12

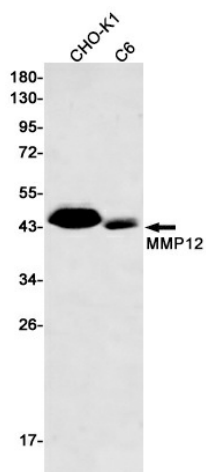


[View online »](#)

## Product images:



Western blot analysis of MMP12 in HeLa lysates using MMP12 antibody.



Western blot analysis of MMP12 in CHO-K1, C6 lysates using MMP12 antibody.