

Product datasheet for **TA384787M**

MMP12 Rabbit Monoclonal Antibody [Clone ID: R03-2B9]

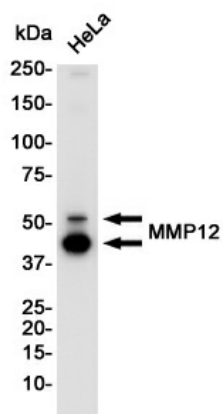
Product data:

Product Type:	Primary Antibodies
Clone Name:	R03-2B9
Applications:	IP, WB
Recommended Dilution:	WB: 1/1000 IP: 1/20
Reactivity:	Human, Rat, Hamster
Host:	Rabbit
Isotype:	IgG
Clonality:	Monoclonal
Immunogen:	A synthetic peptide of human MMP12
Formulation:	50mM Tris-Glycine(pH 7.4), 0.15M NaCl, 40% Glycerol, 0.01% Sodium azide and 0.05% BSA
Concentration:	lot specific
Purification:	Affinity Purified
Conjugation:	Unconjugated
Storage:	Store at 4°C short term. Aliquot and store at -20°C long term. Avoid freeze/thaw cycles.
Stability:	1 year
Predicted Protein Size:	Calculated MW: 54 kDa; Observed MW: 54,45 kDa
Gene Name:	matrix metalloproteinase 12
Database Link:	Entrez Gene 4321 Human P39900
Background:	Swiss-Prot Acc.P39900.May be involved in tissue injury and remodeling. Has significant elastolytic activity. Can accept large and small amino acids at the P1' site, but has a preference for leucine. Aromatic or hydrophobic residues are preferred at the P1 site, with small hydrophobic residues (preferably alanine) occupying P3.
Synonyms:	HME; ME; MGC138506; MME; MMP-12

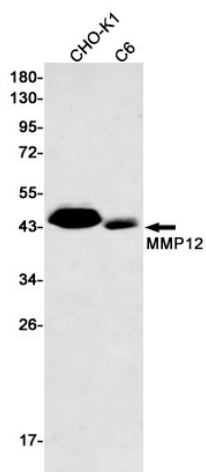


[View online »](#)

Product images:



Western blot analysis of MMP12 in HeLa lysates using MMP12 antibody.



Western blot analysis of MMP12 in CHO-K1, C6 lysates using MMP12 antibody.