

## Product datasheet for **TA384786M**

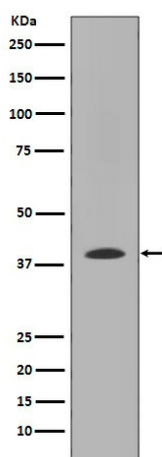
### MMP12 Rabbit Polyclonal Antibody

#### Product data:

Product Type:	Primary Antibodies
Applications:	WB
Recommended Dilution:	WB: 1/1000-1/2000 IP: 1/30 FC: 1/50
Reactivity:	Human
Host:	Rabbit
Isotype:	IgG
Clonality:	Polyclonal
Immunogen:	A synthesized peptide derived from human MMP12
Formulation:	Rabbit IgG in phosphate buffered saline , pH 7.4, 150mM NaCl, 0.02% sodium azide and 50% glycerol.
Concentration:	lot specific
Purification:	Affinity Chromatography
Conjugation:	Unconjugated
Storage:	Store at 4°C short term. Aliquot and store at -20°C long term. Avoid freeze/thaw cycles.
Stability:	1 year
Predicted Protein Size:	54,45,22kDa
Gene Name:	matrix metalloproteinase 12
Database Link:	<a href="#">Entrez Gene 4321 Human P39900</a>
Background:	Swiss-Prot Acc.P39900.MMP-12 lacks a transmembrane domain and furin cleavage site. The zymogen for MMP-12 is about 54 kDa, and is quickly activated to the 45 kDa form, and this breaks down to cascade of active forms, ending with the common 22 kDa form.Stimulated macrophages produce MMP-12; it has also been found in osteosarcoma cells, synovial fibroblasts and lung fibroblasts.
Synonyms:	HME; ME; MGC138506; MME; MMP-12


[View online »](#)

## Product images:



Western blot analysis of MMP12 in WI38 lysates using MMP12 antibody.