

## Product datasheet for TA384784M

### MLKL Rabbit Monoclonal Antibody [Clone ID: R07-5G9]

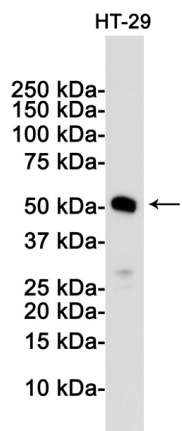
#### Product data:

Product Type:	Primary Antibodies
Clone Name:	R07-5G9
Applications:	WB
Recommended Dilution:	WB: 1/1000
Reactivity:	Human
Host:	Rabbit
Isotype:	IgG
Clonality:	Monoclonal
Immunogen:	Recombinant protein of human MLKL
Formulation:	50mM Tris-Glycine(pH 7.4), 0.15M NaCl, 40% Glycerol, 0.01% Sodium azide and 0.05% BSA
Concentration:	lot specific
Purification:	Affinity Purified
Conjugation:	Unconjugated
Storage:	Store at 4°C short term. Aliquot and store at -20°C long term. Avoid freeze/thaw cycles.
Stability:	1 year
Predicted Protein Size:	Calculated MW: 55 kDa; Observed MW: 55 kDa
Gene Name:	mixed lineage kinase domain-like
Database Link:	<a href="#">Entrez Gene 197259 Human Q8NB16</a>
Background:	Swiss-Prot Acc.Q8NB16.Pseudokinase that plays a key role in TNF-induced necroptosis, a programmed cell death process. Activated following phosphorylation by RIPK3, leading to homotrimerization, localization to the plasma membrane and execution of programmed necrosis characterized by calcium influx and plasma membrane damage. Does not have protein kinase activity (PubMed:22265413, PubMed:22265414, PubMed:22421439, PubMed:24316671). Binds to highly phosphorylated inositol phosphates such as inositolhexakisphosphate (InsP6) which is essential for its necroptotic function (PubMed:29883610).

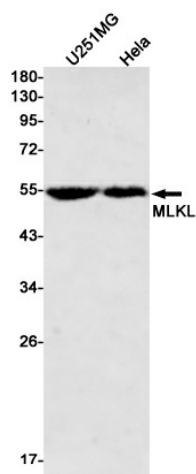

[View online »](#)

Synonyms: FLJ34389

## Product images:



Western blot analysis of MLKL in HT-29 lysates using MLKL antibody.



Western blot analysis of MLKL in U251MG, HeLa lysates using MLKL antibody.