

Product datasheet for **TA384783**

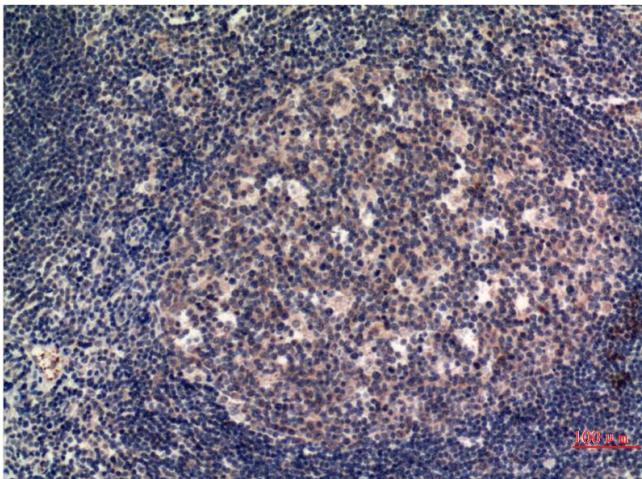
MLKL Mouse Monoclonal Antibody [Clone ID: 5E3-6B4-7G9]

Product data:

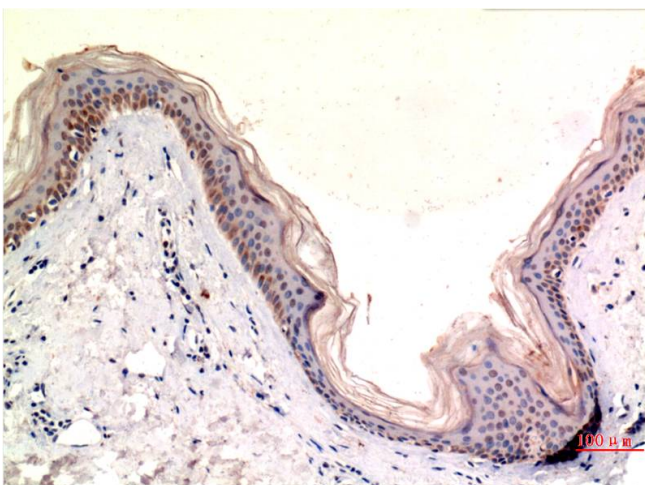
Product Type:	Primary Antibodies
Clone Name:	5E3-6B4-7G9
Applications:	IHC
Recommended Dilution:	IHC: 1/100-200
Reactivity:	Human
Host:	Mouse
Isotype:	IgG1
Clonality:	Monoclonal
Immunogen:	Synthetic peptide conjugated to KLH.
Formulation:	Liquid in PBS containing 50% glycerol, 0.5% BSA and 0.03% Proclin 300, pH 7.3.
Concentration:	lot specific
Purification:	Affinity Purified
Conjugation:	Unconjugated
Storage:	Store at 4°C short term. Aliquot and store at -20°C long term. Avoid freeze/thaw cycles.
Stability:	1 year
Predicted Protein Size:	54kDa
Gene Name:	mixed lineage kinase domain-like
Database Link:	Entrez Gene 197259 Human Q8NB16
Background:	Swiss-Prot Acc.Q8NB16.Pseudokinase that plays a key role in TNF-induced necroptosis, a programmed cell death process. Activated following phosphorylation by RIPK3, leading to homotrimerization, localization to the plasma membrane and execution of programmed necrosis characterized by calcium influx and plasma membrane damage. Does not have protein kinase activity.
Synonyms:	FLJ34389



[View online »](#)

Product images:

Immunohistochemistry analysis of paraffin-embedded Human Tonsil Tissue using MLKL (5E3) antibody. High-pressure and temperature Sodium Citrate pH 6.0 was used for antigen retrieval.



Immunohistochemical analysis of paraffin-embedded Human tonsils using MLKL (5E3) antibody. High-pressure and temperature Sodium Citrate pH 6.0 was used for antigen retrieval.