

## Product datasheet for **TA384782**

### **MNK2 (MKNK2) Rabbit Polyclonal Antibody**

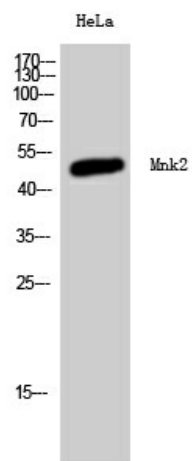
#### **Product data:**

Product Type:	Primary Antibodies
Applications:	ELISA, WB
Recommended Dilution:	WB: 1/1000 ELISA: 1/10000
Reactivity:	Human, Mouse, Rat
Host:	Rabbit
Isotype:	IgG
Clonality:	Polyclonal
Immunogen:	Synthesized peptide derived from the Internal region of human Mnk2.
Formulation:	Liquid in PBS containing 50% glycerol, 0.5% BSA and 0.02% sodium azide, pH 7.3.
Concentration:	lot specific
Purification:	Affinity Purified
Conjugation:	Unconjugated
Storage:	Store at 4°C short term. Aliquot and store at -20°C long term. Avoid freeze/thaw cycles.
Stability:	1 year
Predicted Protein Size:	51 kDa
Gene Name:	MAP kinase interacting serine/threonine kinase 2
Database Link:	<a href="#">Entrez Gene 2872 Human Q9HBH9</a>
Synonyms:	GPRK7; MNK2



[View online »](#)

## Product images:



Western blot analysis of MKNK2 in HeLa lysates using MKNK2 antibody.