

## Product datasheet for **TA384780S**

### MIF Rabbit Monoclonal Antibody [Clone ID: R05-8H5]

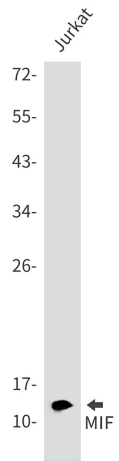
#### Product data:

Product Type:	Primary Antibodies
Clone Name:	R05-8H5
Applications:	WB
Recommended Dilution:	WB: 1/1000
Reactivity:	Human, Mouse, Rat
Host:	Rabbit
Isotype:	IgG
Clonality:	Monoclonal
Immunogen:	Recombinant protein of human MIF
Formulation:	50mM Tris-Glycine(pH 7.4), 0.15M NaCl, 40% Glycerol, 0.01% Sodium azide and 0.05% BSA
Concentration:	lot specific
Purification:	Affinity Purified
Conjugation:	Unconjugated
Storage:	Store at 4°C short term. Aliquot and store at -20°C long term. Avoid freeze/thaw cycles.
Stability:	1 year
Predicted Protein Size:	Calculated MW: 13 kDa; Observed MW: 13 kDa
Gene Name:	macrophage migration inhibitory factor (glycosylation-inhibiting factor)
Database Link:	<a href="#">Entrez Gene 4282 Human P14174</a>
Background:	Swiss-Prot Acc.P14174.Pro-inflammatory cytokine. Involved in the innate immune response to bacterial pathogens. The expression of MIF at sites of inflammation suggests a role as mediator in regulating the function of macrophages in host defense. Counteracts the anti-inflammatory activity of glucocorticoids. Has phenylpyruvate tautomerase and dopachrome tautomerase activity (in vitro), but the physiological substrate is not known. It is not clear whether the tautomerase activity has any physiological relevance, and whether it is important for cytokine activity.
Synonyms:	GIF; GLIF; MMIF

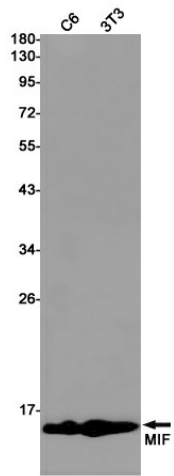


[View online »](#)

Product images:



Western blot analysis of MIF in Jurkat lysates using MIF antibody.



Western blot analysis of MIF in C6, 3T3 lysates using MIF antibody.