

## Product datasheet for **TA384774**

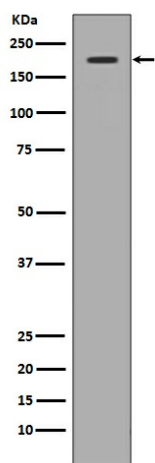
### **MET Rabbit Polyclonal Antibody**

#### **Product data:**

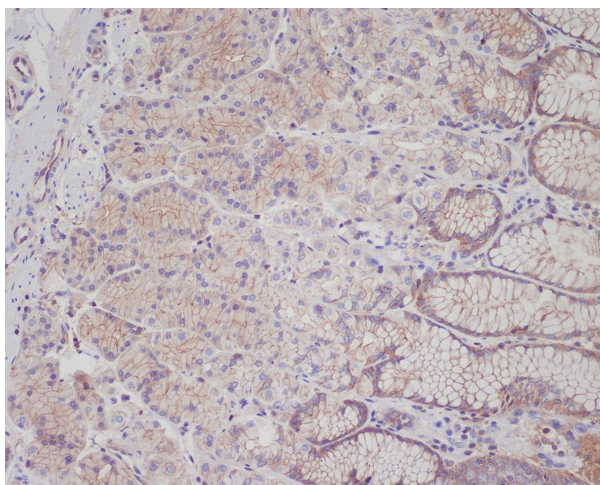
|                                |  |
|--------------------------------|--|
| <b>Product Type:</b>           | Primary Antibodies   |
| <b>Applications:</b>           | FC, IF, IHC, WB  |
| <b>Recommended Dilution:</b>   | WB: 1/500-1/2000<br>IHC: 1/50-1/200<br>ICC/IF: 1/50-1/200<br>FC: 1/50  |
| <b>Reactivity:</b>             | Human, Mouse, Rat  |
| <b>Host:</b>                   | Rabbit   |
| <b>Isotype:</b>                | IgG  |
| <b>Clonality:</b>              | Polyclonal   |
| <b>Immunogen:</b>              | A synthesized peptide derived from human Met (c-Met)   |
| <b>Formulation:</b>            | Rabbit IgG in phosphate buffered saline , pH 7.4, 150mM NaCl, 0.02% sodium azide and 50% glycerol.   |
| <b>Concentration:</b>          | lot specific   |
| <b>Purification:</b>           | Affinity Chromatography  |
| <b>Conjugation:</b>            | Unconjugated   |
| <b>Storage:</b>                | Store at 4°C short term. Aliquot and store at -20°C long term. Avoid freeze/thaw cycles.   |
| <b>Stability:</b>              | 1 year   |
| <b>Predicted Protein Size:</b> | 155kDa   |
| <b>Gene Name:</b>              | MET proto-oncogene, receptor tyrosine kinase   |
| <b>Database Link:</b>          | <a href="#">Entrez Gene 4233 Human P08581</a>  |
| <b>Background:</b>             | Swiss-Prot Acc.P08581.The proto-oncogene MET product is the hepatocyte growth factor receptor and encodes tyrosine-kinase activity. The primary single chain precursor protein is post-translationally cleaved to produce the alpha and beta subunits, which are disulfide linked to form the mature receptor. |
| <b>Synonyms:</b>               | AUTS9; c-Met; HGFR; RCCP2  |



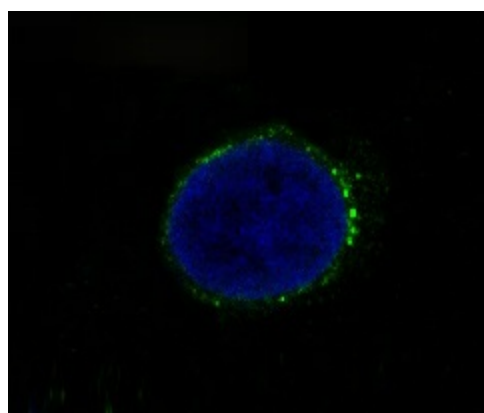
[View online »](#)

**Product images:**

Western blot analysis of c-Met in 293 lysates using c-Met antibody.



Immunohistochemistry analysis of paraffin-embedded Human stomach using Met (c-Met) antibody. High-pressure and temperature Sodium Citrate pH 6.0 was used for antigen retrieval.



Immunofluorescence analysis of c-Met in HT-29 using Met (c-Met) antibody.