

## Product datasheet for **TA384772**

### ME2 Rabbit Monoclonal Antibody [Clone ID: R04-712]

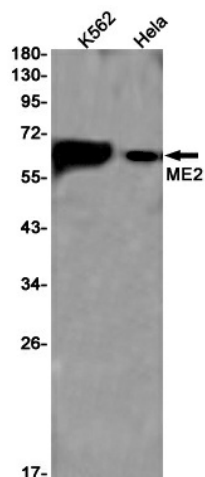
#### Product data:

Product Type:	Primary Antibodies
Clone Name:	R04-712
Applications:	IF, WB
Recommended Dilution:	WB: 1/1000-1/5000 ICC/IF: 1/20-1/50
Reactivity:	Human
Host:	Rabbit
Isotype:	IgG
Clonality:	Monoclonal
Immunogen:	A synthetic peptide of human ME2
Formulation:	50mM Tris-Glycine(pH 7.4), 0.15M NaCl, 40% Glycerol, 0.01% Sodium azide and 0.05% BSA
Concentration:	lot specific
Purification:	Affinity Purified
Conjugation:	Unconjugated
Storage:	Store at 4°C short term. Aliquot and store at -20°C long term. Avoid freeze/thaw cycles.
Stability:	1 year
Predicted Protein Size:	Calculated MW: 65 kDa; Observed MW: 65 kDa
Gene Name:	malic enzyme 2
Database Link:	<a href="#">Entrez Gene 4200 Human P23368</a>
Background:	Swiss-Prot Acc.P23368.MiscellaneousThis isoenzyme can also use NADP+ but is more effective with NAD+.
Synonyms:	NAD-ME; ODS1

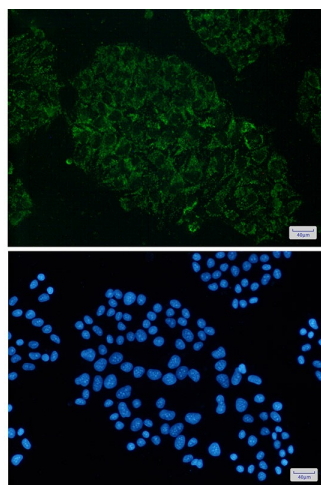


[View online »](#)

## Product images:



Western blot analysis of ME2 in K562, HeLa lysates using ME2 antibody.



Immunocytochemistry analysis of ME2(green) in HeLa using ME2 antibody, and DAPI(blue)