

Product datasheet for **TA384771**

Midkine (MDK) Rabbit Polyclonal Antibody

Product data:

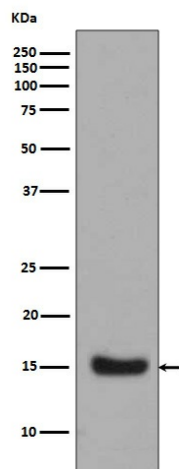
Product Type:	Primary Antibodies
Applications:	IF, IHC, IP, WB
Recommended Dilution:	WB: 1/500-1/2000 IHC: 1/50-1/200 ICC/IF: 1/50-1/200 IP: 1/30
Reactivity:	Human
Host:	Rabbit
Isotype:	IgG
Clonality:	Polyclonal
Immunogen:	A synthesized peptide derived from human Midkine
Formulation:	Rabbit IgG in phosphate buffered saline , pH 7.4, 150mM NaCl, 0.02% sodium azide and 50% glycerol.
Concentration:	lot specific
Purification:	Affinity Chromatography
Conjugation:	Unconjugated
Storage:	Store at 4°C short term. Aliquot and store at -20°C long term. Avoid freeze/thaw cycles.
Stability:	1 year
Predicted Protein Size:	16kDa
Gene Name:	midkine (neurite growth-promoting factor 2)
Database Link:	Entrez Gene 4192 Human P21741
Background:	Swiss-Prot Acc.P21741.Midkine, or MK, is a heparin-binding molecule involved in the regulation of growth and differentiation during embryogenesis. MK expression is tightly regulated during embryonic development by steroid receptors of the retinoic acid superfamily. The mature human MK protein is 118 amino acids in length and contains five intrachain disulfide bonds. MK is a non-glycosylated protein that shows greater than 87% identity between human and mouse.



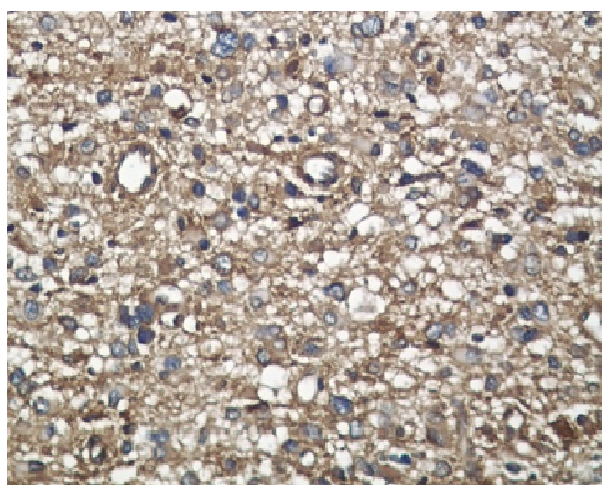
[View online »](#)

Synonyms: ARAP; FLJ27379; midkine; MK; MK1; NEGF2; OTTHUMP00000197041; OTTHUMP00000197042; OTTHUMP00000197045

Product images:



Western blot analysis of Midkine in Midkine Recombinant protein using Midkine antibody.



Immunohistochemical analysis of paraffin-embedded human liver carcinoma, using Midkine Antibody .