

Product datasheet for **TA384770M**

MDH2 Rabbit Monoclonal Antibody [Clone ID: R06-4E2]

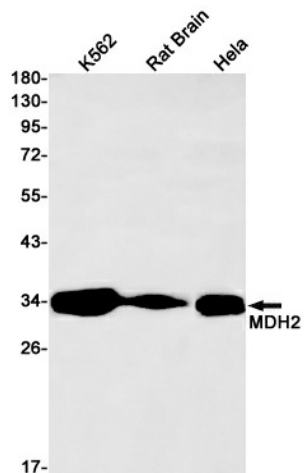
Product data:

Product Type:	Primary Antibodies
Clone Name:	R06-4E2
Applications:	IHC, WB
Recommended Dilution:	WB: 1/2000-1/10000 IHC: 1/20
Reactivity:	Human, Rat
Host:	Rabbit
Isotype:	IgG
Clonality:	Monoclonal
Immunogen:	A synthetic peptide of human MDH2
Formulation:	50mM Tris-Glycine(pH 7.4), 0.15M NaCl, 40% Glycerol, 0.01% Sodium azide and 0.05% BSA
Concentration:	lot specific
Purification:	Affinity Purified
Conjugation:	Unconjugated
Storage:	Store at 4°C short term. Aliquot and store at -20°C long term. Avoid freeze/thaw cycles.
Stability:	1 year
Predicted Protein Size:	Calculated MW: 36 kDa; Observed MW: 36 kDa
Gene Name:	malate dehydrogenase 2
Database Link:	Entrez Gene 4191 Human P40926
Background:	Swiss-Prot Acc.P40926.Malate dehydrogenase, mitochondrial
Synonyms:	M-MDH; MDH; MGC:3559; MOR1

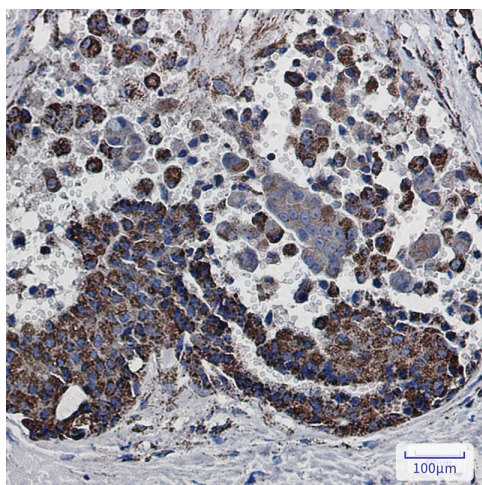


[View online »](#)

Product images:



Western blot analysis of MDH2 in K562, rat Brain, HeLa lysates using MDH2 antibody.



Immunohistochemistry analysis of paraffin-embedded Human breast cancer using MDH2 antibody. High-pressure and temperature Sodium Citrate pH 6.0 was used for antigen retrieval.