

## Product datasheet for **TA384769M**

### **MCM7 Rabbit Monoclonal Antibody [Clone ID: R02-7D2]**

#### **Product data:**

Product Type:	Primary Antibodies
Clone Name:	R02-7D2
Applications:	IHC, IP, WB
Recommended Dilution:	WB: 1/2000 IHC: 1/20 IP: 1/20
Reactivity:	Human, Mouse, Rat
Host:	Rabbit
Isotype:	IgG
Clonality:	Monoclonal
Immunogen:	A synthetic peptide of human MCM7
Formulation:	50mM Tris-Glycine(pH 7.4), 0.15M NaCl, 40% Glycerol, 0.01% Sodium azide and 0.05% BSA
Concentration:	lot specific
Purification:	Affinity Purified
Conjugation:	Unconjugated
Storage:	Store at 4°C short term. Aliquot and store at -20°C long term. Avoid freeze/thaw cycles.
Stability:	1 year
Predicted Protein Size:	Calculated MW: 81 kDa; Observed MW: 81 kDa
Gene Name:	minichromosome maintenance complex component 7
Database Link:	<a href="#">Entrez Gene 4176 Human</a> <a href="#">P33993</a>



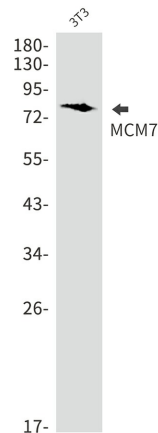
[View online »](#)

**Background:**

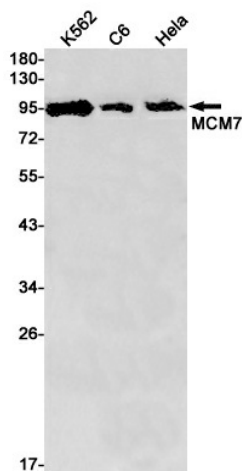
Swiss-Prot Acc.P33993. Acts as component of the MCM2-7 complex (MCM complex) which is the putative replicative helicase essential for 'once per cell cycle' DNA replication initiation and elongation in eukaryotic cells. The active ATPase sites in the MCM2-7 ring are formed through the interaction surfaces of two neighboring subunits such that a critical structure of a conserved arginine finger motif is provided in trans relative to the ATP-binding site of the Walker A box of the adjacent subunit. The six ATPase active sites, however, are likely to contribute differentially to the complex helicase activity. Required for S-phase checkpoint activation upon UV-induced damage.

**Synonyms:**

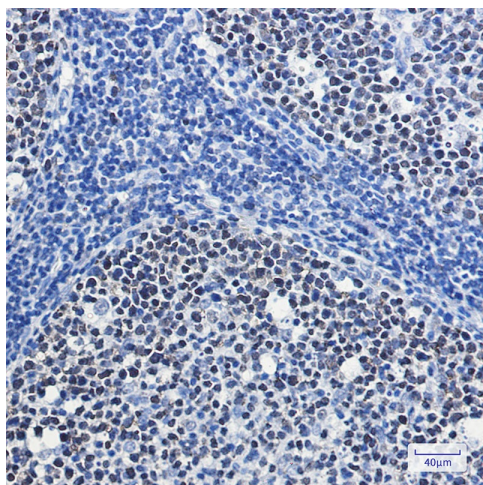
CDC47; MCM2; P1.1-MCM3; P1CDC47; P85MCM; PNAS146

**Product images:**


Western blot analysis of MCM7 in 3T3 lysates using MCM7 antibody.



Western blot analysis of MCM7 in K562, C6, HeLa lysates using MCM7 antibody.



Immunohistochemistry analysis of paraffin-embedded Human tonsil using MCM7 antibody. High-pressure and temperature Sodium Citrate pH 6.0 was used for antigen retrieval.