

Product datasheet for **TA384767S**

MCM5 Rabbit Monoclonal Antibody [Clone ID: R05-5E5]

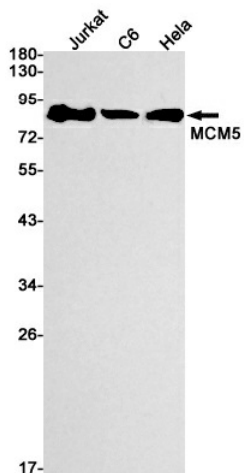
Product data:

Product Type:	Primary Antibodies
Clone Name:	R05-5E5
Applications:	IF, IHC, IP, WB
Recommended Dilution:	WB: 1/2000 IHC: 1/50 ICC/IF: 1/50 IP: 1/20
Reactivity:	Human, Rat
Host:	Rabbit
Isotype:	IgG
Clonality:	Monoclonal
Immunogen:	A synthetic peptide of human MCM5
Formulation:	50mM Tris-Glycine(pH 7.4), 0.15M NaCl, 40% Glycerol, 0.01% Sodium azide and 0.05% BSA
Concentration:	lot specific
Purification:	Affinity Purified
Conjugation:	Unconjugated
Storage:	Store at 4°C short term. Aliquot and store at -20°C long term. Avoid freeze/thaw cycles.
Stability:	1 year
Predicted Protein Size:	Calculated MW: 82 kDa; Observed MW: 82 kDa
Gene Name:	minichromosome maintenance complex component 5
Database Link:	Entrez Gene 4174 Human P33992
Background:	Swiss-Prot Acc.P33992.
Synonyms:	CDC46; MGC5315; P1-CDC46

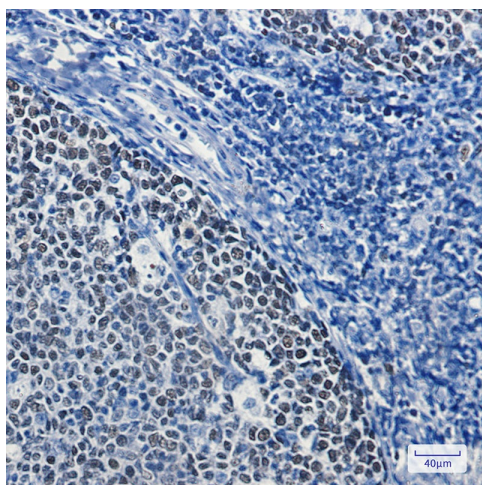


[View online »](#)

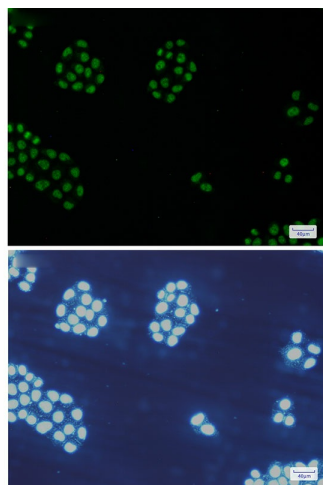
Product images:



Western blot analysis of MCM5 in Jurkat, C6, HeLa lysates using MCM5 antibody.



Immunohistochemistry analysis of paraffin-embedded Human tonsil using MCM5 antibody. High-pressure and temperature Sodium Citrate pH 6.0 was used for antigen retrieval.



Immunocytochemistry analysis of MCM5(green) in HeLa using MCM5 antibody, and DAPI(blue)