

Product datasheet for **TA384766**

MCM5 Rabbit Polyclonal Antibody

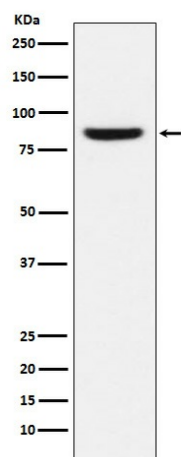
Product data:

Product Type:	Primary Antibodies
Applications:	FC, IF, IHC, IP, WB
Recommended Dilution:	WB: 1/500-1/2000 IHC: 1/50-1/200 ICC/IF: 1/50-1/200 IP: 1/50 FC: 1/50
Reactivity:	Human, Mouse
Host:	Rabbit
Isotype:	IgG
Clonality:	Polyclonal
Immunogen:	A synthesized peptide derived from human MCM5
Formulation:	Rabbit IgG in phosphate buffered saline , pH 7.4, 150mM NaCl, 0.02% sodium azide and 50% glycerol.
Concentration:	lot specific
Purification:	Affinity Chromatography
Conjugation:	Unconjugated
Storage:	Store at 4°C short term. Aliquot and store at -20°C long term. Avoid freeze/thaw cycles.
Stability:	1 year
Predicted Protein Size:	82kDa
Gene Name:	minichromosome maintenance complex component 5
Database Link:	Entrez Gene 4174 Human P33992
Background:	Swiss-Prot Acc.P33992.MCM5 Belongs to the MCM family.
Synonyms:	CDC46; MGC5315; P1-CDC46



[View online »](#)

Product images:



Western blot analysis of MCM5 in MCF-7 lysates using MCM5 antibody.