

## Product datasheet for **TA384765**

### MCM3 Rabbit Polyclonal Antibody

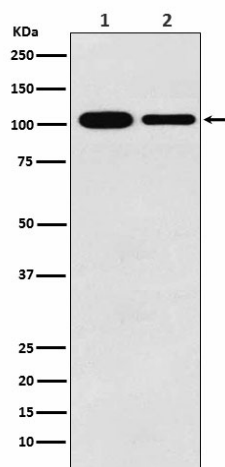
#### Product data:

Product Type:	Primary Antibodies
Applications:	FC, IF, IHC, WB
Recommended Dilution:	WB: 1/500-1/2000 IHC: 1/50-1/200 ICC/IF: 1/50-1/200 FC: 1/50
Reactivity:	Human, Mouse, Rat
Host:	Rabbit
Isotype:	IgG
Clonality:	Polyclonal
Immunogen:	A synthesized peptide derived from human MCM3
Formulation:	Rabbit IgG in phosphate buffered saline , pH 7.4, 150mM NaCl, 0.02% sodium azide and 50% glycerol.
Concentration:	lot specific
Purification:	Affinity Chromatography
Conjugation:	Unconjugated
Storage:	Store at 4°C short term. Aliquot and store at -20°C long term. Avoid freeze/thaw cycles.
Stability:	1 year
Predicted Protein Size:	100kDa
Gene Name:	minichromosome maintenance complex component 3
Database Link:	<a href="#">Entrez Gene 4172 Human P25205</a>
Background:	Swiss-Prot Acc.P25205.Acts as component of the MCM2-7 complex (MCM complex) which is the putative replicative helicase essential for 'once per cell cycle' DNA replication initiation and elongation in eukaryotic cells.
Synonyms:	HCC5; MGC1157; P1-MCM3; P1.h; RLFb



[View online »](#)

## Product images:



Western blot analysis of MCM3 in (1) K562 lysates; (2) RAW264.7 lysates using MCM3 antibody.