

Product datasheet for **TA384764**

MCM2 Rabbit Polyclonal Antibody

Product data:

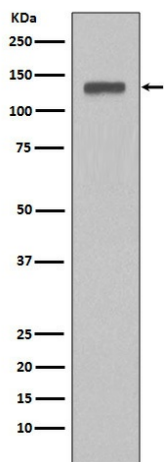
Product Type:	Primary Antibodies
Applications:	IF, IHC, WB
Recommended Dilution:	WB: 1/1000-1/5000 IHC: 1/50-1/200 ICC/IF: 1/50-1/200
Reactivity:	Human, Mouse, Rat
Host:	Rabbit
Isotype:	IgG
Clonality:	Polyclonal
Immunogen:	A synthesized peptide derived from human MCM2
Formulation:	Rabbit IgG in phosphate buffered saline , pH 7.4, 150mM NaCl, 0.02% sodium azide and 50% glycerol.
Concentration:	lot specific
Purification:	Affinity Chromatography
Conjugation:	Unconjugated
Storage:	Store at 4°C short term. Aliquot and store at -20°C long term. Avoid freeze/thaw cycles.
Stability:	1 year
Predicted Protein Size:	125kDa
Gene Name:	minichromosome maintenance complex component 2
Database Link:	Entrez Gene 4171 Human P49736
Background:	Swiss-Prot Acc.P49736.The minichromosome maintenance (MCM) 2-7 proteins are a family of six related proteins required for the initiation and elongation of DNA replication. MCM2-7 bind together to form the heterohexameric MCM complex that is thought to act as a replicative helicase at the DNA replication fork. This complex is also a key component of the pre-replication complex (pre-RC). Cdc6 and CDT1 recruit the MCM complex to the origin recognition complex (ORC) during late mitosis/early G1 phase forming the pre-RC and licensing the DNA for replication.



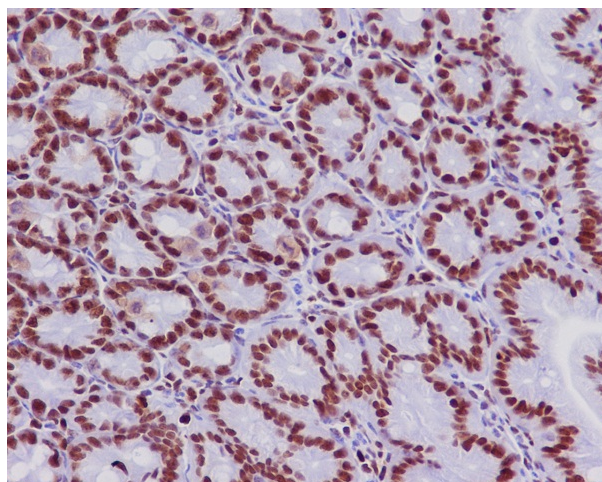
[View online »](#)

Synonyms: BM28; CCNL1; cdc19; CDCL1; D3S3194; KIAA0030; MGC10606; MITOTIN

Product images:



Western blot analysis of MCM2 in HeLa lysates using MCM2 antibody.



Immunohistochemistry analysis of paraffin-embedded mouse colon using MCM2 antibody. High-pressure and temperature Sodium Citrate pH 6.0 was used for antigen retrieval.