

Product datasheet for **TA384762**

CD146 (MCAM) Rabbit Polyclonal Antibody

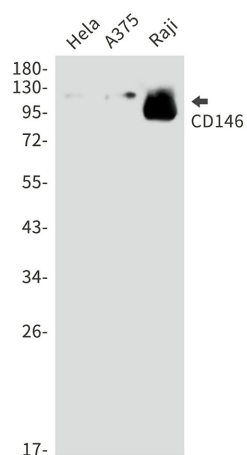
Product data:

Product Type:	Primary Antibodies
Applications:	IF, WB
Recommended Dilution:	WB: 1/2000 ICC/IF: 1/50
Reactivity:	Human
Host:	Rabbit
Isotype:	IgG
Clonality:	Polyclonal
Immunogen:	A synthetic peptide of human CD146
Formulation:	50mM Tris-Glycine(pH 7.4), 0.15M NaCl, 40% Glycerol, 0.01% Sodium azide and 0.05% BSA
Concentration:	lot specific
Purification:	Affinity Purified
Conjugation:	Unconjugated
Storage:	Store at 4°C short term. Aliquot and store at -20°C long term. Avoid freeze/thaw cycles.
Stability:	1 year
Predicted Protein Size:	Calculated MW: 72 kDa; Observed MW: 120 kDa
Gene Name:	melanoma cell adhesion molecule
Database Link:	Entrez Gene 4162 Human P43121
Background:	Swiss-Prot Acc.P43121.
Synonyms:	CD146; Gicerin; MUC18



[View online »](#)

Product images:



Western blot analysis of CD146 in HeLa, A375, Raji lysates using CD146 antibody.