

## Product datasheet for **TA384761**

### CD146 (MCAM) Rabbit Polyclonal Antibody

#### Product data:

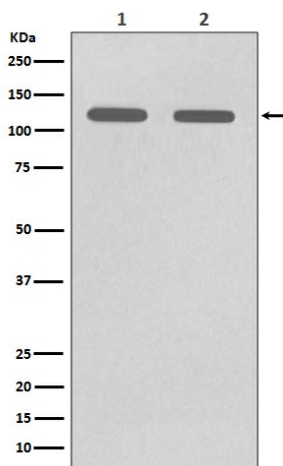
Product Type:	Primary Antibodies
Applications:	FC, IF, IHC, IP, WB
Recommended Dilution:	WB: 1/500-1/2000 IHC: 1/50-1/200 ICC/IF: 1/50-1/200 IP: 1/50 FC: 1/50
Reactivity:	Human, Mouse, Rat
Host:	Rabbit
Isotype:	IgG
Clonality:	Polyclonal
Immunogen:	A synthesized peptide derived from human CD146
Formulation:	Rabbit IgG in phosphate buffered saline , pH 7.4, 150mM NaCl, 0.02% sodium azide and 50% glycerol.
Concentration:	lot specific
Purification:	Affinity Chromatography
Conjugation:	Unconjugated
Storage:	Store at 4°C short term. Aliquot and store at -20°C long term. Avoid freeze/thaw cycles.
Stability:	1 year
Predicted Protein Size:	72kDa
Gene Name:	melanoma cell adhesion molecule
Database Link:	<a href="#">Entrez Gene 4162 Human P43121</a>
Background:	Swiss-Prot Acc.P43121.CD146 plays a role in cell adhesion, and in cohesion of the endothelial monolayer at intercellular junctions in vascular tissue. Its expression may allow melanoma cells to interact with cellular elements of the vascular system, thereby enhancing hematogeneous tumor spread. Could be an adhesion molecule active in neural crest cells during embryonic development.



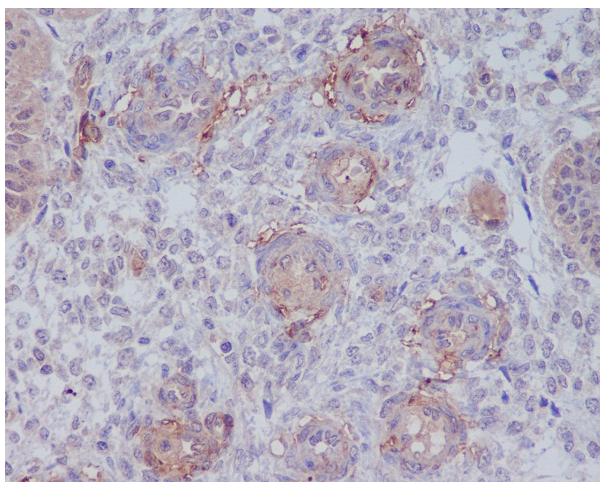
[View online »](#)

Synonyms: CD146; Gicerin; MUC18

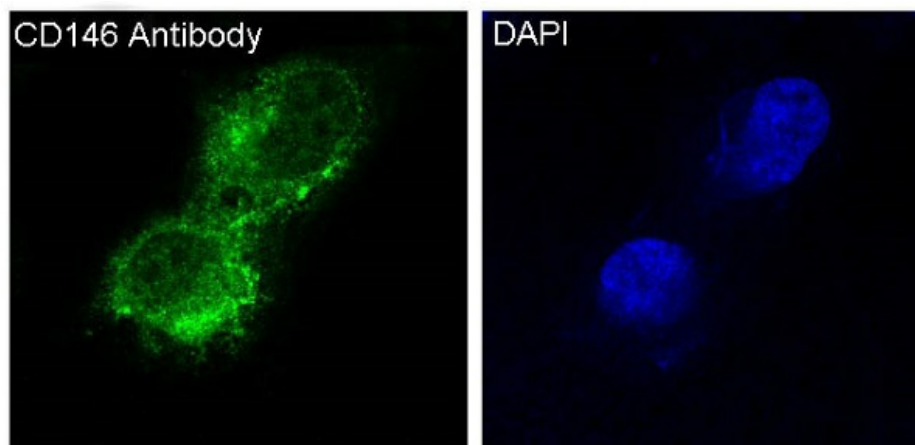
### Product images:



Western blot analysis of CD146 in (1) A375 lysates;(2) HUVEC lysates using CD146 antibody.



Immunohistochemistry analysis of paraffin-embedded Human uterus using CD146 antibody.High-pressure and temperature Sodium Citrate pH 6.0 was used for antigen retrieval.



Immunofluorescence analysis of CD146 in A375 using CD146 antibody.