

## Product datasheet for TA384760M

### Myelin Basic Protein (MBP) Rabbit Monoclonal Antibody [Clone ID: R08-9K4]

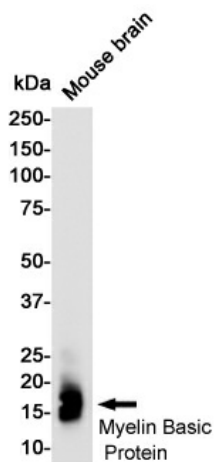
#### Product data:

Product Type:	Primary Antibodies
Clone Name:	R08-9K4
Applications:	WB
Recommended Dilution:	WB: 1/1000
Reactivity:	Mouse, Rat
Host:	Rabbit
Isotype:	IgG
Clonality:	Monoclonal
Immunogen:	A synthetic peptide of human Myelin Basic Protein
Formulation:	50mM Tris-Glycine(pH 7.4), 0.15M NaCl, 40% Glycerol, 0.01% Sodium azide and 0.05% BSA
Concentration:	lot specific
Purification:	Affinity Purified
Conjugation:	Unconjugated
Storage:	Store at 4°C short term. Aliquot and store at -20°C long term. Avoid freeze/thaw cycles.
Stability:	1 year
Predicted Protein Size:	Calculated MW: 33 kDa; Observed MW: 18 kDa
Gene Name:	myelin basic protein
Database Link:	<a href="#">P02686</a>
Background:	Swiss-Prot Acc.P02686.The classic group of MBP isoforms (isoform 4-isoform 14) are with PLP the most abundant protein components of the myelin membrane in the CNS. They have a role in both its formation and stabilization. The smaller isoforms might have an important role in remyelination of denuded axons in multiple sclerosis. The non-classic group of MBP isoforms (isoform 1-isoform 3/Golli-MBPs) may preferentially have a role in the early developing brain long before myelination, maybe as components of transcriptional complexes, and may also be involved in signaling pathways in T-cells and neural cells. Differential splicing events combined with optional post-translational modifications give a wide spectrum of isomers, with each of them potentially having a specialized function. Induces T-cell proliferation.

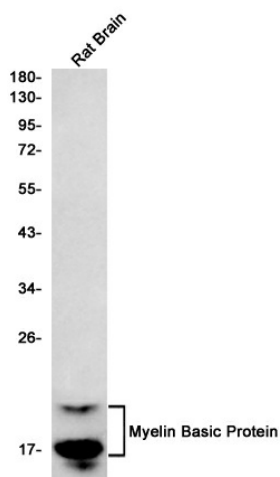

[View online »](#)

Synonyms: Golli-mbp; MGC99675; OTTHUMP00000174383

## Product images:



Western blot analysis of Myelin Basic Protein in mouse Brain lysates using Myelin Basic Protein antibody.



Western blot analysis of Myelin Basic Protein in rat Brain lysates using Myelin Basic Protein antibody.