

## Product datasheet for **TA384759M**

### Myelin Basic Protein (MBP) Rabbit Monoclonal Antibody [Clone ID: R07-4I6]

#### Product data:

Product Type:	Primary Antibodies
Clone Name:	R07-4I6
Applications:	WB
Recommended Dilution:	WB: 1/2000-1/10000
Reactivity:	Human, Rat
Host:	Rabbit
Isotype:	IgG
Clonality:	Monoclonal
Immunogen:	Recombinant protein of human Myelin Basic Protein
Formulation:	50mM Tris-Glycine(pH 7.4), 0.15M NaCl, 40% Glycerol, 0.01% Sodium azide and 0.05% BSA
Concentration:	lot specific
Purification:	Affinity Purified
Conjugation:	Unconjugated
Storage:	Store at 4°C short term. Aliquot and store at -20°C long term. Avoid freeze/thaw cycles.
Stability:	1 year
Predicted Protein Size:	Calculated MW: 33 kDa; Observed MW: 18 kDa
Gene Name:	myelin basic protein
Database Link:	<a href="#">Entrez Gene 4155 Human P02686</a>



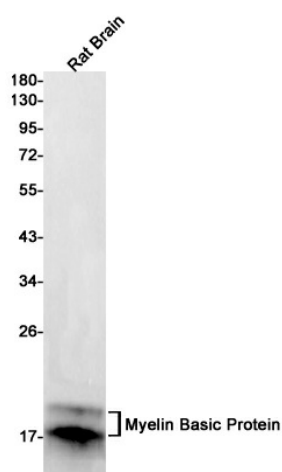
[View online »](#)

**Background:**

Swiss-Prot Acc.P02686. The classic group of MBP isoforms (isoform 4-isoform 14) are with PLP the most abundant protein components of the myelin membrane in the CNS. They have a role in both its formation and stabilization. The smaller isoforms might have an important role in remyelination of denuded axons in multiple sclerosis. The non-classic group of MBP isoforms (isoform 1-isoform 3/Golli-MBPs) may preferentially have a role in the early developing brain long before myelination, maybe as components of transcriptional complexes, and may also be involved in signaling pathways in T-cells and neural cells. Differential splicing events combined with optional post-translational modifications give a wide spectrum of isomers, with each of them potentially having a specialized function. Induces T-cell proliferation.

**Synonyms:**

Golli-mbp; MGC99675; OTTHUMP00000174383

**Product images:**


Western blot analysis of Myelin Basic Protein in rat Brain lysates using Myelin Basic Protein antibody.