

Product datasheet for **TA384757**

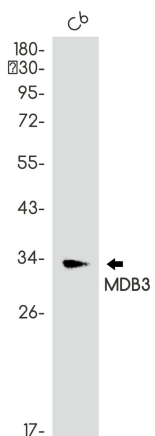
MBD3 Rabbit Polyclonal Antibody

Product data:

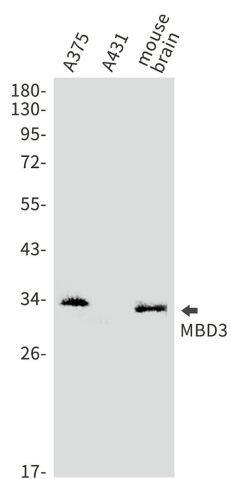
Product Type:	Primary Antibodies
Applications:	FC, IF, IP, WB
Recommended Dilution:	WB: 1/1000 ICC/IF: 1/50 FC: 1/20 IP: 1/20
Reactivity:	Human, Mouse, Rat
Host:	Rabbit
Isotype:	IgG
Clonality:	Polyclonal
Immunogen:	A synthetic peptide of human MBD3
Formulation:	50mM Tris-Glycine(pH 7.4), 0.15M NaCl, 40% Glycerol, 0.01% Sodium azide and 0.05% BSA
Concentration:	lot specific
Purification:	Affinity Purified
Conjugation:	Unconjugated
Storage:	Store at 4°C short term. Aliquot and store at -20°C long term. Avoid freeze/thaw cycles.
Stability:	1 year
Predicted Protein Size:	Calculated MW: 33 kDa; Observed MW: 33 kDa
Gene Name:	methyl-CpG binding domain protein 3
Database Link:	Entrez Gene 53615 Human O95983
Background:	Swiss-Prot Acc.O95983.
Synonyms:	MBD3



[View online »](#)

Product images:


Western blot analysis of MBD3 in C6 lysates using MBD3 antibody.



Western blot analysis of MBD3 in A375, A431, mouse brain lysates using MBD3 antibody.