

## Product datasheet for **TA384754S**

### Methionyl tRNA synthetase (MARS) Rabbit Monoclonal Antibody [Clone ID: R03-3D4]

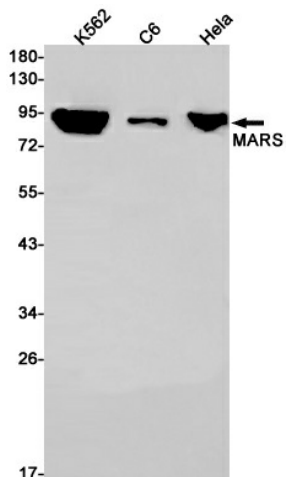
#### Product data:

|                         |   |
|-------------------------|---|
| Product Type:           | Primary Antibodies  |
| Clone Name:             | R03-3D4   |
| Applications:           | IF, IHC, IP, WB   |
| Recommended Dilution:   | WB: 1/2000-1/10000<br>IHC: 1/20<br>ICC/IF: 1/50<br>IP: 1/20   |
| Reactivity:             | Human, Rat  |
| Host:                   | Rabbit  |
| Isotype:                | IgG   |
| Clonality:              | Monoclonal  |
| Immunogen:              | A synthetic peptide of human MARS   |
| Formulation:            | 50mM Tris-Glycine(pH 7.4), 0.15M NaCl, 40% Glycerol, 0.01% Sodium azide and 0.05% BSA   |
| Concentration:          | lot specific  |
| Purification:           | Affinity Purified   |
| Conjugation:            | Unconjugated  |
| Storage:                | Store at 4°C short term. Aliquot and store at -20°C long term. Avoid freeze/thaw cycles.  |
| Stability:              | 1 year  |
| Predicted Protein Size: | Calculated MW: 101 kDa; Observed MW: 101 kDa  |
| Gene Name:              | methionyl-tRNA synthetase   |
| Database Link:          | <a href="#">Entrez Gene 4141 Human P56192</a>   |
| Background:             | Swiss-Prot Acc.P56192.Catalyzes the specific attachment of an amino acid to its cognate tRNA in a 2 step reaction: the amino acid (AA) is first activated by ATP to form AA-AMP and then transferred to the acceptor end of the tRNA. |
| Synonyms:               | FLJ35667; MetRS; MTRNS  |

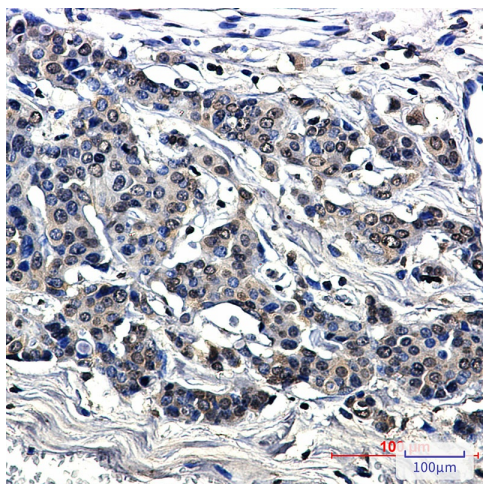


[View online »](#)

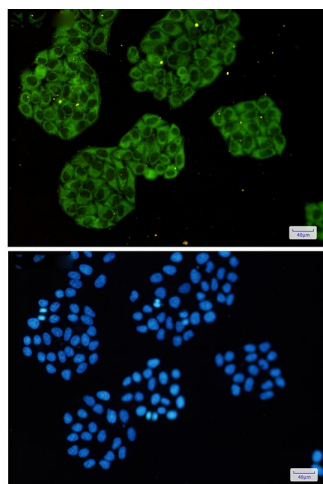
Product images:



Western blot analysis of MARS in K562, C6, HeLa lysates using MetRS antibody.



Immunohistochemistry analysis of paraffin-embedded Human breast cancer using MetRS/MARS antibody. High-pressure and temperature Sodium Citrate pH 6.0 was used for antigen retrieval.



Immunocytochemistry analysis of MARS (green) in HeLa using MARS antibody, and DAPI (blue)

