

## Product datasheet for **TA384747**

### Tau (MAPT) Rabbit Monoclonal Antibody [Clone ID: R09-3G2]

#### Product data:

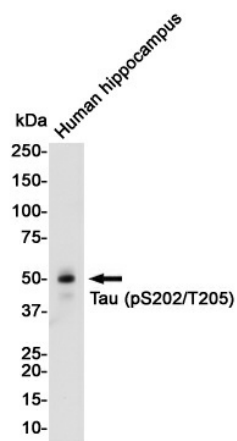
Product Type:	Primary Antibodies
Clone Name:	R09-3G2
Applications:	IP, WB
Recommended Dilution:	WB: 1/1000 IP: 1/20
Reactivity:	Human
Host:	Rabbit
Isotype:	IgG
Clonality:	Monoclonal
Immunogen:	A synthetic phosphopeptide corresponding to residues surrounding Ser202/Thr205 of human Tau (Phosphorylated)
Formulation:	50mM Tris-Glycine(pH 7.4), 0.15M NaCl, 40% Glycerol, 0.01% Sodium azide and 0.05% BSA
Concentration:	lot specific
Purification:	Affinity Purified
Conjugation:	Unconjugated
Storage:	Store at 4°C short term. Aliquot and store at -20°C long term. Avoid freeze/thaw cycles.
Stability:	1 year
Predicted Protein Size:	Calculated MW: 79 kDa; Observed MW: 50-80 kDa
Gene Name:	microtubule associated protein tau
Database Link:	<a href="#">Entrez Gene 4137 Human P10636</a>
Background:	Swiss-Prot Acc.P10636.Promotes microtubule assembly and stability, and might be involved in the establishment and maintenance of neuronal polarity. The C-terminus binds axonal microtubules while the N-terminus binds neural plasma membrane components, suggesting that tau functions as a linker protein between both. Axonal polarity is predetermined by TAU/MAPT localization (in the neuronal cell) in the domain of the cell body defined by the centrosome. The short isoforms allow plasticity of the cytoskeleton whereas the longer isoforms may preferentially play a role in its stabilization.



[View online »](#)

Synonyms: DDPAC; FLJ31424; FTDP-17; MAPTL; MGC138549; MSTD; MTBT1; MTBT2; PHF-tau; PPND; TAU

### Product images:



Western blot analysis of Tau (Phospho-Ser202/Thr205) in Human Fetal brain lysates using Phospho-Tau (Ser202/Thr205) antibody.