

Product datasheet for **TA384739**

JNK1 (MAPK8) Rabbit Polyclonal Antibody

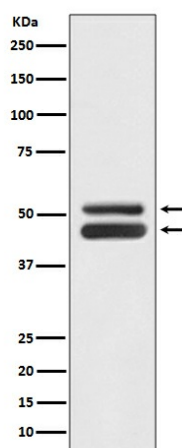
Product data:

Product Type:	Primary Antibodies
Applications:	IP, WB
Recommended Dilution:	WB: 1/1000-1/2000 IP: 1/50
Reactivity:	Human, Mouse, Rat
Host:	Rabbit
Isotype:	IgG
Clonality:	Polyclonal
Immunogen:	A synthesized peptide derived from human JNK1/JNK3
Formulation:	Rabbit IgG in phosphate buffered saline , pH 7.4, 150mM NaCl, 0.02% sodium azide and 50% glycerol.
Concentration:	lot specific
Purification:	Affinity Chromatography
Conjugation:	Unconjugated
Storage:	Store at 4°C short term. Aliquot and store at -20°C long term. Avoid freeze/thaw cycles.
Stability:	1 year
Predicted Protein Size:	46,54kDa
Gene Name:	mitogen-activated protein kinase 8
Database Link:	Entrez Gene 5599 Human P45983
Background:	Swiss-Prot Acc.P45983,P53779.The stress-activated protein kinase/Jun-amino-terminal kinase SAPK/JNK is potently and preferentially activated by a variety of environmental stresses including UV and gamma radiation, ceramides, inflammatory cytokines, and in some instances, by growth factors and GPCR agonists. As with the other MAPKs, the core signaling unit is composed of a MAPKKK, typically MEKK1-MEKK4, or by one of the mixed lineage kinases (MLKs), which phosphorylate and activate MKK4/7.
Synonyms:	JNK; JNK-46; JNK1; JNK1A2; JNK21B1/2; OTTHUMP00000019552; PRKM8; SAPK1



[View online »](#)

Product images:



Western blot analysis of JNK1/JNK3 in HeLa lysates using JNK1/3 antibody.