

## Product datasheet for **TA384738S**

### MAPK6 Rabbit Monoclonal Antibody [Clone ID: R04-5B8]

#### Product data:

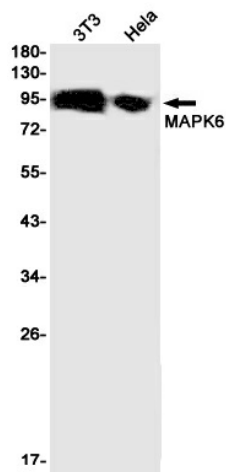
|                         |  |
|-------------------------|--|
| Product Type:           | Primary Antibodies   |
| Clone Name:             | R04-5B8  |
| Applications:           | IHC, IP, WB  |
| Recommended Dilution:   | WB: 1/1000-1/5000<br>IHC: 1/20-1/100<br>IP: 1/20   |
| Reactivity:             | Human, Mouse   |
| Host:                   | Rabbit   |
| Isotype:                | IgG  |
| Clonality:              | Monoclonal   |
| Immunogen:              | A synthetic peptide of human MAPK6   |
| Formulation:            | 50mM Tris-Glycine(pH 7.4), 0.15M NaCl, 40% Glycerol, 0.01% Sodium azide and 0.05% BSA  |
| Concentration:          | lot specific   |
| Purification:           | Affinity Purified  |
| Conjugation:            | Unconjugated   |
| Storage:                | Store at 4°C short term. Aliquot and store at -20°C long term. Avoid freeze/thaw cycles.   |
| Stability:              | 1 year   |
| Predicted Protein Size: | Calculated MW: 83 kDa; Observed MW: 105 kDa  |
| Gene Name:              | mitogen-activated protein kinase 6   |
| Database Link:          | <a href="#">Entrez Gene 5597 Human Q16659</a>  |
| Background:             | Swiss-Prot Acc.Q16659. Atypical MAPK protein. Phosphorylates microtubule-associated protein 2 (MAP2) and MAPKAPK5. The precise role of the complex formed with MAPKAPK5 is still unclear, but the complex follows a complex set of phosphorylation events: upon interaction with atypical MAPKAPK5, ERK3/MAPK6 is phosphorylated at Ser-189 and then mediates phosphorylation and activation of MAPKAPK5, which in turn phosphorylates ERK3/MAPK6. May promote entry in the cell cycle . |



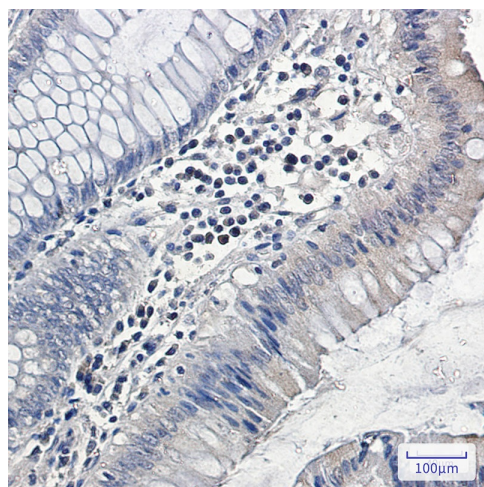
[View online »](#)

Synonyms: DKFZp686F03189; ERK-3; ERK3; HsT17250; p97-MAPK; p97MAPK; PRKM6

### Product images:



Western blot analysis of MAPK6 in 3T3, HeLa lysates using MAPK6 antibody.



Immunohistochemistry analysis of paraffin-embedded Human colon cancer using MAPK6/ERK3 antibody. High-pressure and temperature Sodium Citrate pH 6.0 was used for antigen retrieval.