

Product datasheet for **TA384738M**

MAPK6 Rabbit Monoclonal Antibody [Clone ID: R04-5B8]

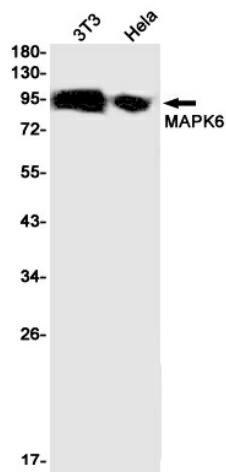
Product data:

Product Type:	Primary Antibodies
Clone Name:	R04-5B8
Applications:	IHC, IP, WB
Recommended Dilution:	WB: 1/1000-1/5000 IHC: 1/20-1/100 IP: 1/20
Reactivity:	Human, Mouse
Host:	Rabbit
Isotype:	IgG
Clonality:	Monoclonal
Immunogen:	A synthetic peptide of human MAPK6
Formulation:	50mM Tris-Glycine(pH 7.4), 0.15M NaCl, 40% Glycerol, 0.01% Sodium azide and 0.05% BSA
Concentration:	lot specific
Purification:	Affinity Purified
Conjugation:	Unconjugated
Storage:	Store at 4°C short term. Aliquot and store at -20°C long term. Avoid freeze/thaw cycles.
Stability:	1 year
Predicted Protein Size:	Calculated MW: 83 kDa; Observed MW: 105 kDa
Gene Name:	mitogen-activated protein kinase 6
Database Link:	Entrez Gene 5597 Human Q16659
Background:	Swiss-Prot Acc.Q16659.Atypical MAPK protein. Phosphorylates microtubule-associated protein 2 (MAP2) and MAPKAPK5. The precise role of the complex formed with MAPKAPK5 is still unclear, but the complex follows a complex set of phosphorylation events: upon interaction with atypical MAPKAPK5, ERK3/MAPK6 is phosphorylated at Ser-189 and then mediates phosphorylation and activation of MAPKAPK5, which in turn phosphorylates ERK3/MAPK6. May promote entry in the cell cycle .

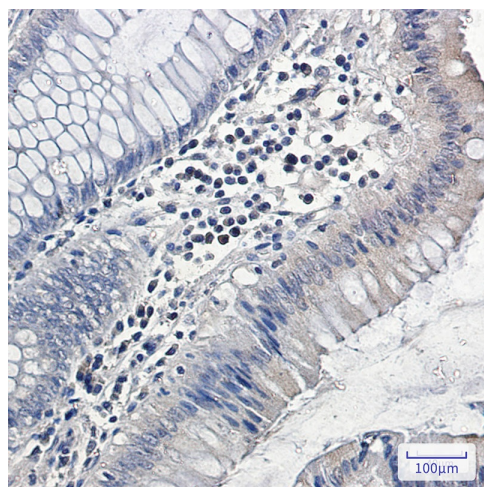

[View online »](#)

Synonyms: DKFZp686F03189; ERK-3; ERK3; HsT17250; p97-MAPK; p97MAPK; PRKM6

Product images:



Western blot analysis of MAPK6 in 3T3, HeLa lysates using MAPK6 antibody.



Immunohistochemistry analysis of paraffin-embedded Human colon cancer using MAPK6/ERK3 antibody. High-pressure and temperature Sodium Citrate pH 6.0 was used for antigen retrieval.