

## Product datasheet for **TA384736S**

### ERK1 (MAPK3) Rabbit Polyclonal Antibody

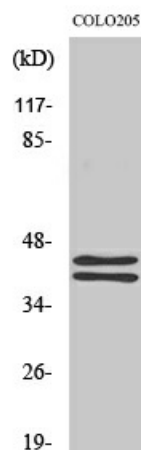
#### Product data:

Product Type:	Primary Antibodies
Applications:	ELISA, IF, IHC, WB
Recommended Dilution:	IF: 1/50-200 WB: 1/500-1/2000 IHC: 1/100-1/300 ELISA: 1/10000
Reactivity:	Human, Mouse, Rat
Host:	Rabbit
Isotype:	IgG
Clonality:	Polyclonal
Immunogen:	The antiserum was produced against synthesized peptide derived from human p44/42 MAPK. AA range:330-379
Formulation:	Liquid in PBS containing 50% glycerol, 0.5% BSA and 0.02% sodium azide, pH 7.3.
Concentration:	lot specific
Purification:	Affinity Purified
Conjugation:	Unconjugated
Storage:	Store at 4°C short term. Aliquot and store at -20°C long term. Avoid freeze/thaw cycles.
Stability:	1 year
Predicted Protein Size:	Observed MW (kDa):42,44
Gene Name:	mitogen-activated protein kinase 3
Database Link:	<a href="#">Entrez Gene 5595 Human P27361</a>
Background:	Swiss-Prot Acc.P27361.
Synonyms:	ERK-1; ERK1; ERT2; HS44KDAP; HUMKER1A; MGC20180; OTTHUMP00000174538; p44-ERK1; p44-MAPK; P44ERK1; p44mapk; PRKM3



[View online »](#)

## Product images:



Western blot analysis of ERK1/2 in COLO205 lysates using ERK1/2 antibody.