

Product datasheet for **TA384734**

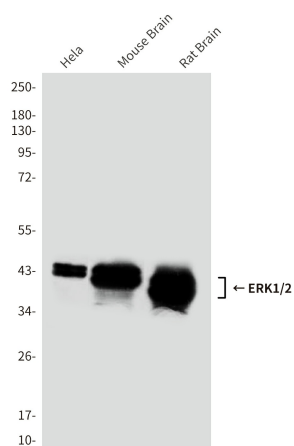
ERK1 (MAPK3) Mouse Monoclonal Antibody [Clone ID: 1B4-6A3-10A5]

Product data:

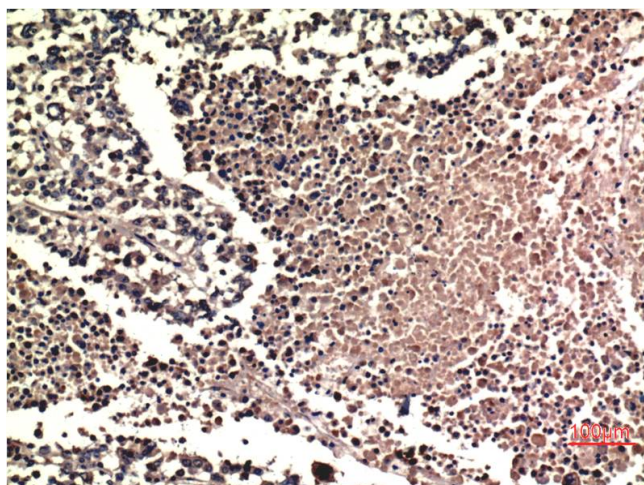
Product Type:	Primary Antibodies
Clone Name:	1B4-6A3-10A5
Applications:	IHC, WB
Recommended Dilution:	WB: 1/1000-2000 IHC: 1/100-200
Reactivity:	Human, Rat, Mouse
Host:	Mouse
Isotype:	IgG1
Clonality:	Monoclonal
Immunogen:	Synthetic peptide conjugated to KLH.
Formulation:	Liquid in PBS containing 50% glycerol, 0.5% BSA and 0.03% Proclin 300, pH 7.3.
Concentration:	lot specific
Purification:	Affinity Purified
Conjugation:	Unconjugated
Storage:	Store at 4°C short term. Aliquot and store at -20°C long term. Avoid freeze/thaw cycles.
Stability:	1 year
Predicted Protein Size:	44/42kDa
Gene Name:	mitogen-activated protein kinase 3
Database Link:	Entrez Gene 5595 Human P27361
Background:	Swiss-Prot Acc.P27361,P28482.
Synonyms:	ERK-1; ERK1; ERT2; HS44KDAP; HUMKER1A; MGC20180; OTTHUMP00000174538; p44-ERK1; p44-MAPK; P44ERK1; p44mapk; PRKM3



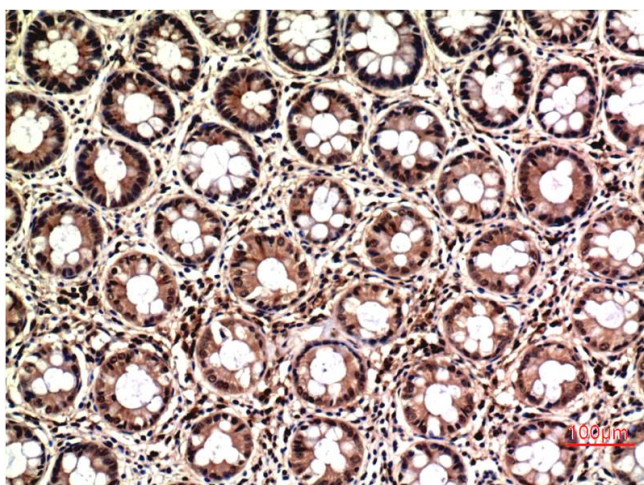
[View online »](#)

Product images:

Western blot analysis of ERK1/2 (1B4) in HeLa lysates, mouse Brain lysates, rat Brain lysates using ERK1/2 antibody.



Immunohistochemistry analysis of paraffin-embedded Human Lung Carcinoma Tissue using ERK1/2 antibody. High-pressure and temperature Sodium Citrate pH 6.0 was used for antigen retrieval.



Immunohistochemistry analysis of paraffin-embedded Human Colon Carcinoma Tissue using ERK1/2 antibody. High-pressure and temperature Sodium Citrate pH 6.0 was used for antigen retrieval.