

## Product datasheet for **TA384727S**

### **p38 (MAPK14) Rabbit Polyclonal Antibody**

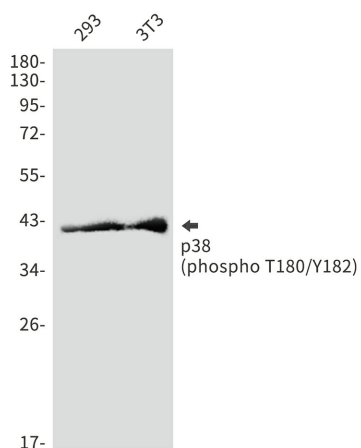
#### **Product data:**

<b>Product Type:</b>	Primary Antibodies
<b>Applications:</b>	WB
<b>Recommended Dilution:</b>	WB: 1/1000
<b>Reactivity:</b>	Human, Mouse
<b>Host:</b>	Rabbit
<b>Isotype:</b>	IgG
<b>Clonality:</b>	Polyclonal
<b>Immunogen:</b>	A synthetic phosphopeptide corresponding to residues surrounding Thr180/Tyr182 of human p38 (Phosphorylated)
<b>Formulation:</b>	50mM Tris-Glycine(pH 7.4), 0.15M NaCl, 40% Glycerol, 0.01% Sodium azide and 0.05% BSA
<b>Concentration:</b>	lot specific
<b>Purification:</b>	Affinity Purified
<b>Conjugation:</b>	Unconjugated
<b>Storage:</b>	Store at 4°C short term. Aliquot and store at -20°C long term. Avoid freeze/thaw cycles.
<b>Stability:</b>	1 year
<b>Predicted Protein Size:</b>	Calculated MW: 41 kDa; Observed MW: 41 kDa
<b>Gene Name:</b>	mitogen-activated protein kinase 14
<b>Database Link:</b>	<a href="#">Entrez Gene 1432 Human Q16539</a>
<b>Background:</b>	Swiss-Prot Acc.Q16539.
<b>Synonyms:</b>	CSBP; CSBP1; CSBP2; CSPB1; EXIP; Mxi2; p38; p38ALPHA; PRKM14; PRKM15; RK; SAPK2A



[View online »](#)

## Product images:



Western blot analysis of p38 (Phospho-T180/Y182) in 293, 3T3 lysates using Phospho-p38 (Thr180/Tyr182) antibody.