

Product datasheet for **TA384727M**

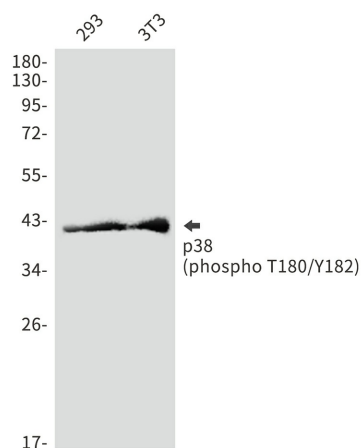
p38 (MAPK14) Rabbit Polyclonal Antibody

Product data:

Product Type:	Primary Antibodies
Applications:	WB
Recommended Dilution:	WB: 1/1000
Reactivity:	Human, Mouse
Host:	Rabbit
Isotype:	IgG
Clonality:	Polyclonal
Immunogen:	A synthetic phosphopeptide corresponding to residues surrounding Thr180/Tyr182 of human p38 (Phosphorylated)
Formulation:	50mM Tris-Glycine(pH 7.4), 0.15M NaCl, 40% Glycerol, 0.01% Sodium azide and 0.05% BSA
Concentration:	lot specific
Purification:	Affinity Purified
Conjugation:	Unconjugated
Storage:	Store at 4°C short term. Aliquot and store at -20°C long term. Avoid freeze/thaw cycles.
Stability:	1 year
Predicted Protein Size:	Calculated MW: 41 kDa; Observed MW: 41 kDa
Gene Name:	mitogen-activated protein kinase 14
Database Link:	Entrez Gene 1432 Human Q16539
Background:	Swiss-Prot Acc.Q16539.
Synonyms:	CSBP; CSBP1; CSBP2; CSPB1; EXIP; Mxi2; p38; p38ALPHA; PRKM14; PRKM15; RK; SAPK2A


[View online »](#)

Product images:



Western blot analysis of p38 (Phospho-T180/Y182) in 293, 3T3 lysates using Phospho-p38 (Thr180/Tyr182) antibody.