

Product datasheet for **TA384721S**

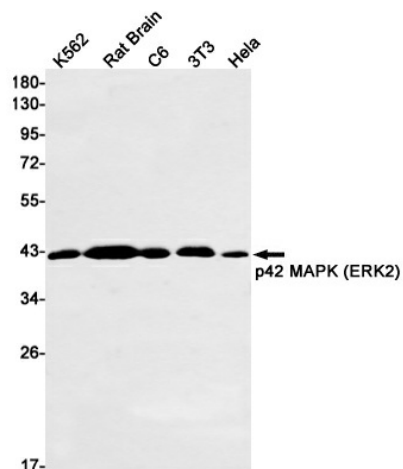
ERK2 (MAPK1) Rabbit Monoclonal Antibody [Clone ID: R07-1A9]

Product data:

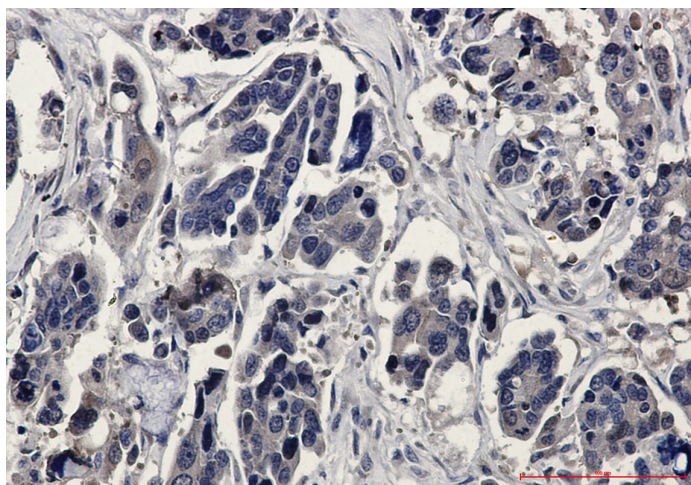
Product Type:	Primary Antibodies
Clone Name:	R07-1A9
Applications:	IF, IHC, IP, WB
Recommended Dilution:	WB: 1/1000 IHC: 1/20 ICC/IF: 1/50 IP: 1/20
Reactivity:	Human, Mouse, Rat
Host:	Rabbit
Isotype:	IgG
Clonality:	Monoclonal
Immunogen:	A synthetic peptide of human ERK2
Formulation:	50mM Tris-Glycine(pH 7.4), 0.15M NaCl, 40% Glycerol, 0.01% Sodium azide and 0.05% BSA
Concentration:	lot specific
Purification:	Affinity Purified
Conjugation:	Unconjugated
Storage:	Store at 4°C short term. Aliquot and store at -20°C long term. Avoid freeze/thaw cycles.
Stability:	1 year
Predicted Protein Size:	Calculated MW: 41 kDa; Observed MW: 41 kDa
Gene Name:	mitogen-activated protein kinase 1
Database Link:	Entrez Gene 5594 Human P28482
Background:	Swiss-Prot Acc.P28482.
Synonyms:	ERK; ERK-2; ERK2; ERT1; MAPK2; p38; p40; p41; p41 mapk; p42-MAPK; P42MAPK; PRKM1; PRKM2



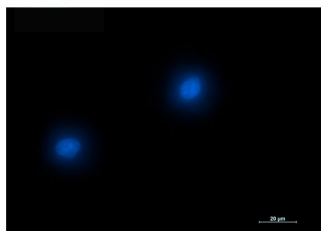
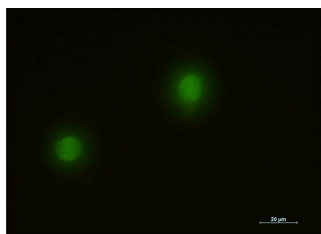
[View online »](#)

Product images:

Western blot analysis of ERK2 in K562, rat Brain, C6, 3T3, HeLa lysates using ERK2 antibody.



Immunohistochemistry analysis of paraffin-embedded Human Cholangiocarcinoma using ERK2 antibody. High-pressure and temperature Sodium Citrate pH 6.0 was used for antigen retrieval.



Immunocytochemistry analysis of ERK2 (green) in K562 using ERK2 antibody, and DAPI (blue).