

Product datasheet for **TA384718**

TAK1 (MAP3K7) Rabbit Polyclonal Antibody

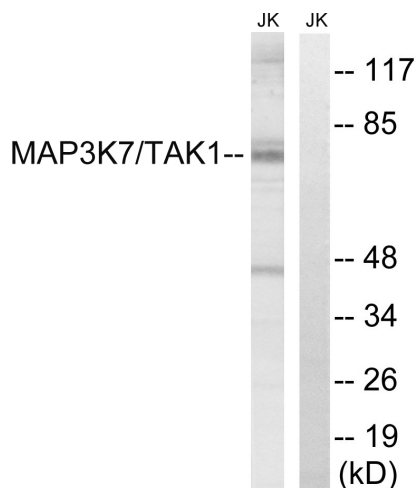
Product data:

Product Type:	Primary Antibodies
Applications:	ELISA, IF, IHC, WB
Recommended Dilution:	IF: 1/50-200 WB: 1/500-1/2000 IHC: 1/100-1/300 ELISA: 1/40000
Reactivity:	Human, Mouse, Rat
Host:	Rabbit
Isotype:	IgG
Clonality:	Polyclonal
Immunogen:	The antiserum was produced against synthesized peptide derived from human MAP3K7. AA range:161-210
Formulation:	Liquid in PBS containing 50% glycerol, 0.5% BSA and 0.02% sodium azide, pH 7.3.
Concentration:	lot specific
Purification:	Affinity Purified
Conjugation:	Unconjugated
Storage:	Store at 4°C short term. Aliquot and store at -20°C long term. Avoid freeze/thaw cycles.
Stability:	1 year
Predicted Protein Size:	Observed MW (kDa):70
Gene Name:	mitogen-activated protein kinase kinase kinase 7
Database Link:	Entrez Gene 6885 Human O43318
Background:	Swiss-Prot Acc.O43318.
Synonyms:	MEKK7; TAK1; TGF1a

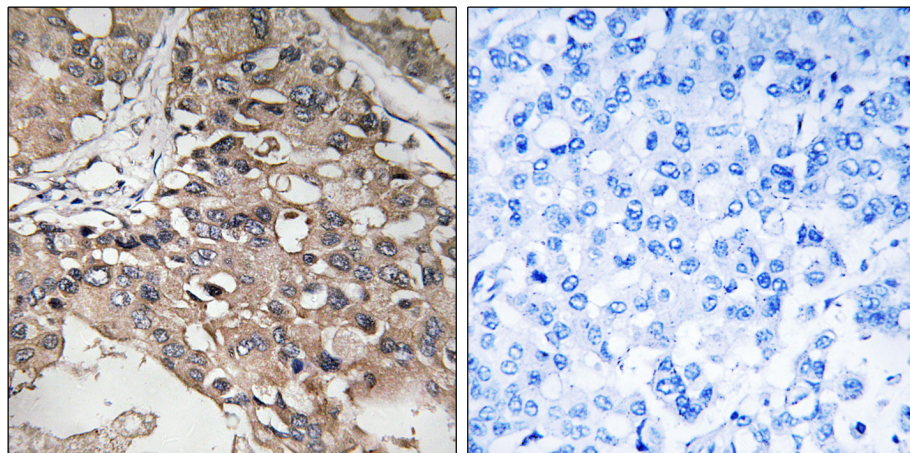


[View online »](#)

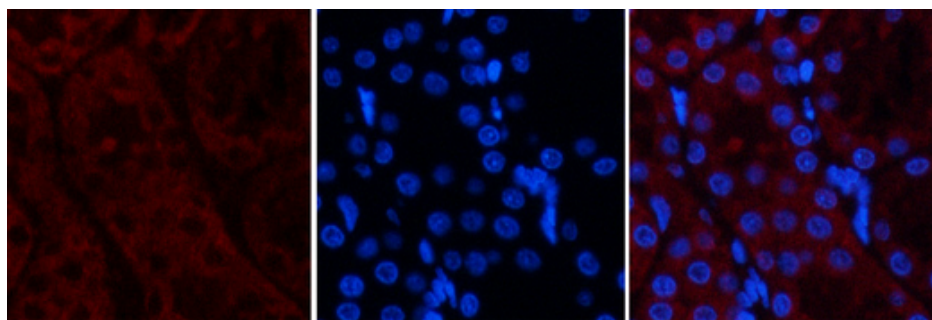
Product images:



Western blot analysis of TAK1 in Jurkat lysates, treated with heat shock lysates using TAK1 antibody. The lane on the right is blocked with the synthesized peptide.



Immunohistochemistry analysis of paraffin-embedded Human breast carcinoma using TAK1 antibody. High-pressure and temperature Sodium Citrate pH 6.0 was used for antigen retrieval. Sample with blocking peptide on the right.

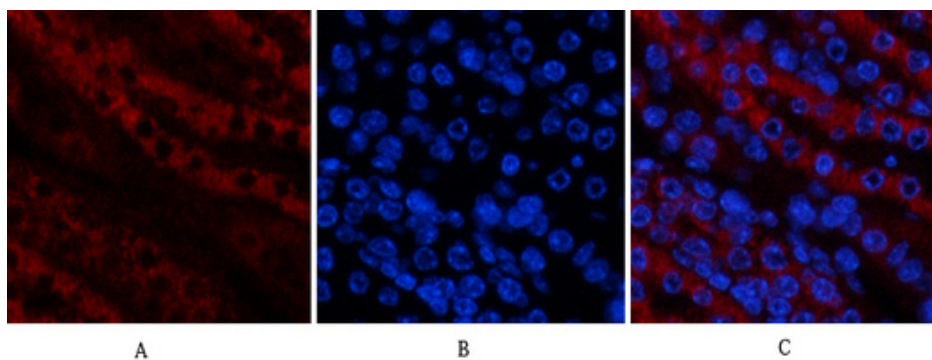


Immunofluorescence analysis of TAK1 in rat kidney using Tak1 antibody (red), and DAPI (blue).

A

B

C



Immunofluorescence analysis of TAK1 in mouse kidney using Tak1 antibody(red),and DAPI (blue).