

## Product datasheet for **TA384717**

### **TAK1 (MAP3K7) Rabbit Polyclonal Antibody**

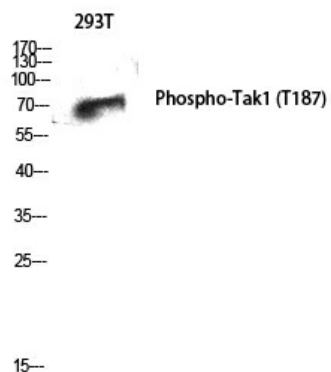
#### **Product data:**

<b>Product Type:</b>	Primary Antibodies
<b>Applications:</b>	ELISA, IHC, WB
<b>Recommended Dilution:</b>	WB: 1/500-1/2000 IHC: 1/100-1/300 ELISA: 1/10000
<b>Reactivity:</b>	Human, Mouse, Rat
<b>Host:</b>	Rabbit
<b>Isotype:</b>	IgG
<b>Clonality:</b>	Polyclonal
<b>Immunogen:</b>	The antiserum was produced against synthesized peptide derived from human MAP3K7 around the phosphorylation site of Thr187. AA range:161-210 (Phosphorylated)
<b>Formulation:</b>	Liquid in PBS containing 50% glycerol, 0.5% BSA and 0.02% sodium azide, pH 7.3.
<b>Concentration:</b>	lot specific
<b>Purification:</b>	Affinity Purified
<b>Conjugation:</b>	Unconjugated
<b>Storage:</b>	Store at 4°C short term. Aliquot and store at -20°C long term. Avoid freeze/thaw cycles.
<b>Stability:</b>	1 year
<b>Predicted Protein Size:</b>	Observed MW (kDa):60
<b>Gene Name:</b>	mitogen-activated protein kinase kinase kinase 7
<b>Database Link:</b>	<a href="#">Entrez Gene 6885 Human O43318</a>
<b>Background:</b>	Swiss-Prot Acc.O43318.
<b>Synonyms:</b>	MEKK7; TAK1; TGF1a



[View online »](#)

## Product images:



Western blot analysis of Phospho-TAK1 (Thr187) in 293T lysates using Phospho-TAK1 (Thr187) antibody.