

Product datasheet for **TA384715**

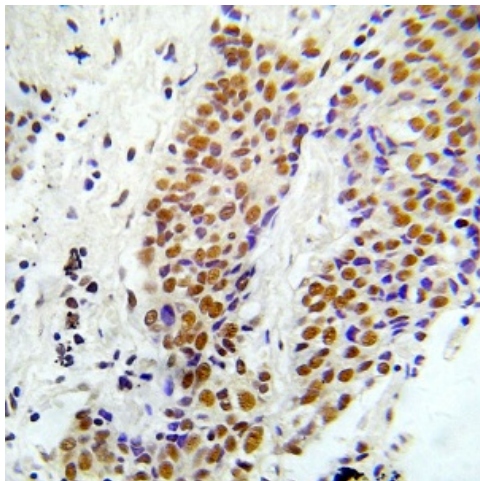
ASK1 (MAP3K5) Rabbit Polyclonal Antibody

Product data:

Product Type:	Primary Antibodies
Applications:	IHC, WB
Recommended Dilution:	WB: 1/500-1/1000 IHC: 1/50
Reactivity:	Human, Mouse, Rat
Host:	Rabbit
Isotype:	IgG
Clonality:	Polyclonal
Immunogen:	The antiserum was produced against synthesized phosphopeptide derived from human ASK1 around the phosphorylation site of serine 966 (S-I-SP-L-P). (Phosphorylated)
Formulation:	Liquid in PBS containing 50% glycerol, 0.5% BSA and 0.02% sodium azide, pH 7.3.
Concentration:	lot specific
Purification:	Affinity Purified
Conjugation:	Unconjugated
Storage:	Store at 4°C short term. Aliquot and store at -20°C long term. Avoid freeze/thaw cycles.
Stability:	1 year
Predicted Protein Size:	155 kDa
Gene Name:	mitogen-activated protein kinase kinase 5
Database Link:	Entrez Gene 4217 Human Q99683
Background:	Swiss-Prot Acc.Q99683.
Synonyms:	ASK-1; ASK1; MAPKKK5; MEKK5



[View online »](#)

Product images:

Immunohistochemical analysis of paraffin-embedded human lung adenocarcinoma tissue using ASK1 (Phospho-Ser966) Antibody.