

Product datasheet for **TA384714S**

MEKK2 (MAP3K2) Rabbit Monoclonal Antibody [Clone ID: R06-2K7]

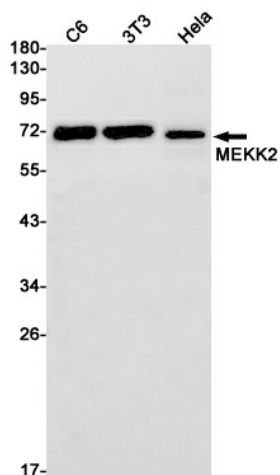
Product data:

Product Type:	Primary Antibodies
Clone Name:	R06-2K7
Applications:	IF, IP, WB
Recommended Dilution:	WB: 1/2000-1/10000 ICC/IF: 1/50 IP: 1/20
Reactivity:	Human, Mouse, Rat
Host:	Rabbit
Isotype:	IgG
Clonality:	Monoclonal
Immunogen:	A synthetic peptide of human MEKK2
Formulation:	50mM Tris-Glycine(pH 7.4), 0.15M NaCl, 40% Glycerol, 0.01% Sodium azide and 0.05% BSA
Concentration:	lot specific
Purification:	Affinity Purified
Conjugation:	Unconjugated
Storage:	Store at 4°C short term. Aliquot and store at -20°C long term. Avoid freeze/thaw cycles.
Stability:	1 year
Predicted Protein Size:	Calculated MW: 70 kDa; Observed MW: 70 kDa
Gene Name:	mitogen-activated protein kinase kinase kinase 2
Database Link:	Entrez Gene 10746 Human Q9Y2U5
Background:	Swiss-Prot Acc.Q9Y2U5.Component of a protein kinase signal transduction cascade. Regulates the JNK and ERK5 pathways by phosphorylating and activating MAP2K5 and MAP2K7 . Plays a role in caveolae kiss-and-run dynamics.
Synonyms:	MAPKKK2; MEKK2; MEKK2B; OTTHUMP00000203817

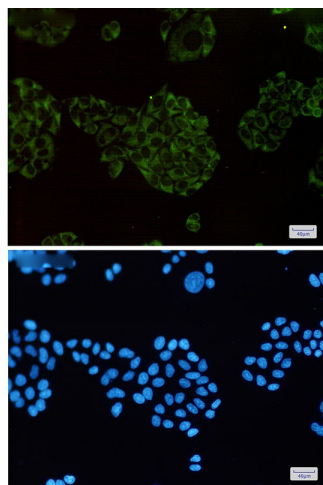


[View online »](#)

Product images:



Western blot analysis of MEKK2 in C6, 3T3, HeLa lysates using MEKK2 antibody.



Immunocytochemistry analysis of MEKK2(green) in HeLa using MEKK2 antibody, and DAPI(blue)