

Product datasheet for **TA384713**

MEKK2 (MAP3K2) Rabbit Polyclonal Antibody

Product data:

Product Type:	Primary Antibodies
Applications:	FC, IF, IHC, IP, WB
Recommended Dilution:	WB: 1/1000 IHC: 1/50-1/200 ICC/IF: 1/50-1/200 IP: 1/30 FC: 1/50
Reactivity:	Human, Mouse, Rat
Host:	Rabbit
Isotype:	IgG
Clonality:	Polyclonal
Immunogen:	A synthesized peptide derived from human MEKK2
Formulation:	Rabbit IgG in phosphate buffered saline , pH 7.4, 150mM NaCl, 0.02% sodium azide and 50% glycerol.
Concentration:	lot specific
Purification:	Affinity Chromatography
Conjugation:	Unconjugated
Storage:	Store at 4°C short term. Aliquot and store at -20°C long term. Avoid freeze/thaw cycles.
Stability:	1 year
Predicted Protein Size:	70kDa
Gene Name:	mitogen-activated protein kinase kinase kinase 2
Database Link:	Entrez Gene 10746 Human Q9Y2U5



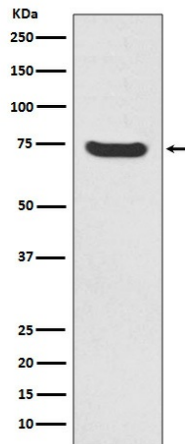
[View online »](#)

Background:

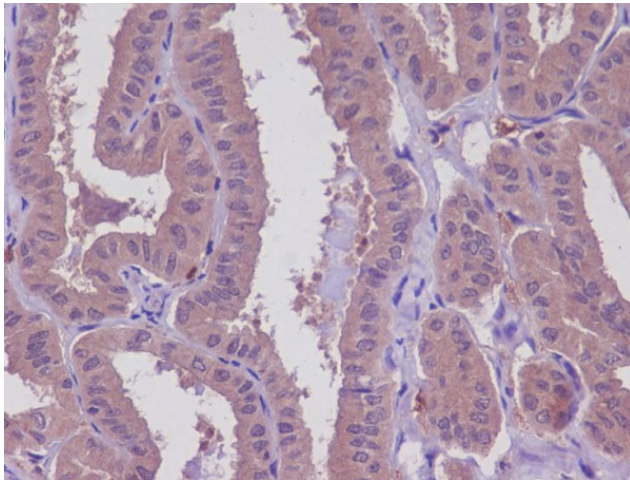
Swiss-Prot Acc.Q9Y2U5. The protein encoded by this gene is a member of serine/threonine protein kinase family. This kinase preferentially activates the kinases involved in the MAP kinase signaling pathway including MAPK7 and MAP2K4. This kinase has been shown to directly phosphorylate and activate I κ B kinases (IKKs), and thus plays a role in NF- κ B signaling pathway. This kinase has also been found to bind and activate protein kinase C-related kinase 2 (PRKCL2/PRK2), which suggests its involvement in PRKCL2 regulated signaling process.

Synonyms:

MAPKKK2; MEKK2; MEKK2B; OTTHUMP00000203817

Product images:

Western blot analysis of MEKK2 in HeLa lysates using MEKK2 antibody.



Immunohistochemistry analysis of paraffin-embedded Human thyroid cancer using MEKK2 antibody. High-pressure and temperature Sodium Citrate pH 6.0 was used for antigen retrieval.