

## Product datasheet for **TA384712S**

### MEK6 (MAP2K6) Mouse Monoclonal Antibody [Clone ID: 8A11-G11-G11]

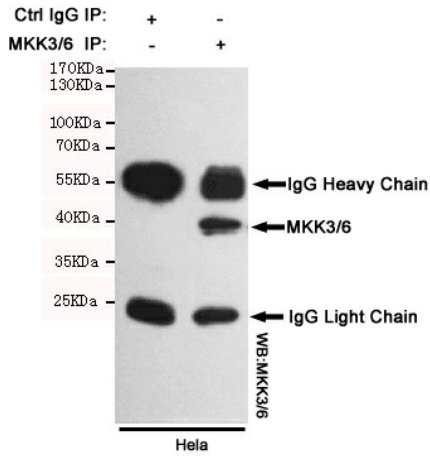
#### Product data:

Product Type:	Primary Antibodies
Clone Name:	8A11-G11-G11
Applications:	IP, WB
Recommended Dilution:	WB: 1/1000 IP: 1/20
Reactivity:	Human, Rat
Host:	Mouse
Isotype:	IgG1
Clonality:	Monoclonal
Immunogen:	Purified recombinant human MKK6 protein fragments expressed in E.coli.
Formulation:	Liquid in PBS containing 50% glycerol, 0.5% BSA and 0.03% Proclin 300, pH 7.3.
Concentration:	lot specific
Purification:	Affinity Purified
Conjugation:	Unconjugated
Storage:	Store at 4°C short term. Aliquot and store at -20°C long term. Avoid freeze/thaw cycles.
Stability:	1 year
Predicted Protein Size:	40kDa
Gene Name:	mitogen-activated protein kinase kinase 6
Database Link:	<a href="#">Entrez Gene 5608 Human P52564</a>
Background:	Swiss-Prot Acc.P52564.Dual specificity kinase. Is activated by cytokines and environmental stress in vivo. Catalyzes the concomitant phosphorylation of a threonine and a tyrosine residue in the MAP kinase p38.
Synonyms:	MAPKK6; MEK6; MKK6; PRKMK6; SAPKK3

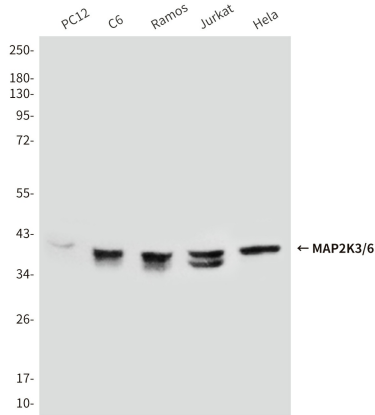


[View online »](#)

Product images:



Immunoprecipitation analysis of HeLa cell lysates using MKK3/6 mouse mAb.



Western blot analysis of MAP2K6 (8A11) in PC-12, C6, Ramos, Jurkat and HeLa lysates using MKK3/6 antibody.