

Product datasheet for **TA384711**

MEK3 (MAP2K3) Rabbit Polyclonal Antibody

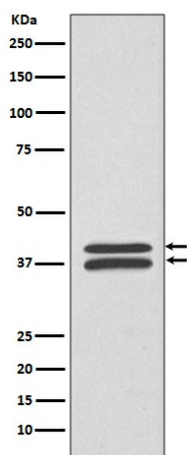
Product data:

Product Type:	Primary Antibodies
Applications:	FC, IF, IHC, IP, WB
Recommended Dilution:	WB: 1/500-1/1000 IHC: 1/50-1/200 ICC/IF: 1/100-1/500 IP: 1/50 FC: 1/50
Reactivity:	Human, Mouse, Rat
Host:	Rabbit
Isotype:	IgG
Clonality:	Polyclonal
Immunogen:	A synthesized peptide derived from human MEK3/MEK6
Formulation:	Rabbit IgG in phosphate buffered saline , pH 7.4, 150mM NaCl, 0.02% sodium azide and 50% glycerol.
Concentration:	lot specific
Purification:	Affinity Chromatography
Conjugation:	Unconjugated
Storage:	Store at 4°C short term. Aliquot and store at -20°C long term. Avoid freeze/thaw cycles.
Stability:	1 year
Predicted Protein Size:	39,37kDa
Gene Name:	mitogen-activated protein kinase kinase 3
Database Link:	Entrez Gene 5606 Human P46734
Background:	Swiss-Prot Acc.P46734,P52564.Dual specificity kinase. Is activated by cytokines and environmental stress in vivo. Catalyzes the concomitant phosphorylation of a threonine and a tyrosine residue in the MAP kinase p38.
Synonyms:	MAPKK3; MEK3; MKK3; OTTHUMP00000166044; PRKMK3

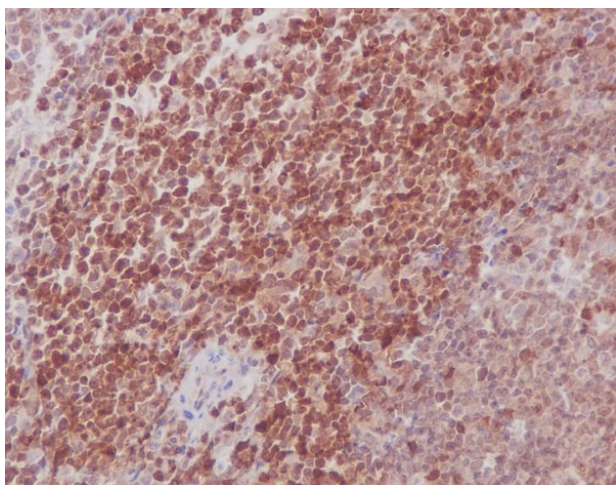


[View online »](#)

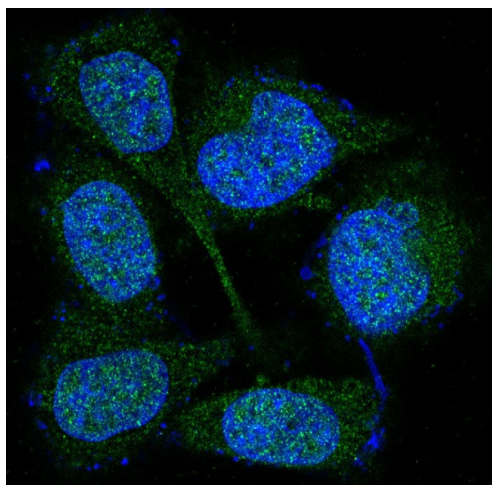
Product images:



Western blot analysis of MEK3/MEK6 in HeLa lysates using MEK3/MEK6 antibody.



Immunohistochemistry analysis of paraffin-embedded mouse spleen using MEK3/MEK6 antibody. High-pressure and temperature Sodium Citrate pH 6.0 was used for antigen retrieval.



Immunofluorescence analysis of MEK3/MEK6 in Hela using MEK3/MEK6 antibody.