

Product datasheet for **TA384709**

MEK2 (MAP2K2) Rabbit Polyclonal Antibody

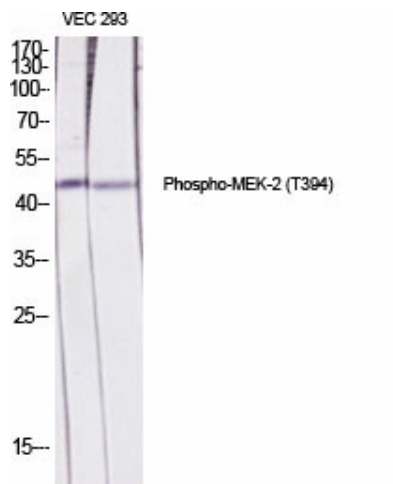
Product data:

Product Type:	Primary Antibodies
Applications:	ELISA, IHC, IP, WB
Recommended Dilution:	WB: 1/500-1/2000 IHC: 1/100-1/300 Immunoprecipitation: 2-5 ELISA: 1/10000
Reactivity:	Human, Mouse, Rat
Host:	Rabbit
Isotype:	IgG
Clonality:	Polyclonal
Immunogen:	The antiserum was produced against synthesized peptide derived from human MEK2 around the phosphorylation site of Thr394. AA range:261-310 (Phosphorylated)
Formulation:	Liquid in PBS containing 50% glycerol, 0.5% BSA and 0.02% sodium azide, pH 7.3.
Concentration:	lot specific
Purification:	Affinity Purified
Conjugation:	Unconjugated
Storage:	Store at 4°C short term. Aliquot and store at -20°C long term. Avoid freeze/thaw cycles.
Stability:	1 year
Predicted Protein Size:	Observed MW (kDa): 44
Gene Name:	mitogen-activated protein kinase kinase 2
Database Link:	Entrez Gene 5605 Human P36507
Background:	Swiss-Prot Acc.P36507.
Synonyms:	FLJ26075; MAPKK2; MEK2; MKK2; PRKMK2

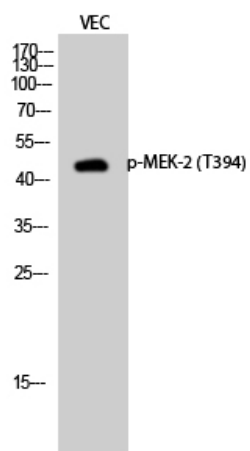


[View online »](#)

Product images:



Western blot analysis of Phospho-MEK2 (Thr394) in various lysates using Phospho-MEK2 (Thr394) antibody.



Western blot analysis of Phospho-MEK2 (Thr394) in VEC lysates using Phospho-MEK2 (T394) antibody.