

Product datasheet for **TA384707M**

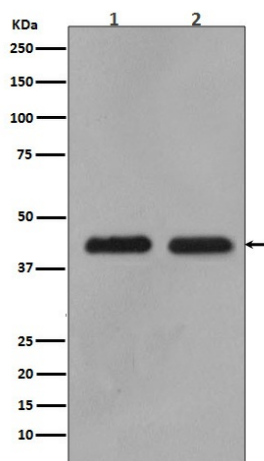
MEK1 (MAP2K1) Rabbit Polyclonal Antibody

Product data:

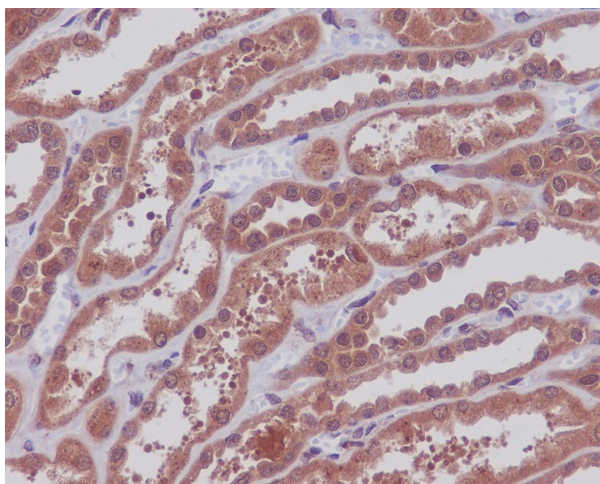
Product Type:	Primary Antibodies
Applications:	IF, IHC, IP, WB
Recommended Dilution:	WB: 1/1000 IHC: 1/100-1/500 ICC/IF: 1/50-1/100 IP: 1/50-1/100
Reactivity:	Human, Mouse, Rat
Host:	Rabbit
Isotype:	IgG
Clonality:	Polyclonal
Immunogen:	A synthesized peptide derived from human MEK1/2
Formulation:	Rabbit IgG in phosphate buffered saline , pH 7.4, 150mM NaCl, 0.02% sodium azide and 50% glycerol.
Concentration:	lot specific
Purification:	Affinity Chromatography
Conjugation:	Unconjugated
Storage:	Store at 4°C short term. Aliquot and store at -20°C long term. Avoid freeze/thaw cycles.
Stability:	1 year
Predicted Protein Size:	44kDa
Gene Name:	mitogen-activated protein kinase kinase 1
Database Link:	Entrez Gene 5604 Human Q02750
Background:	Swiss-Prot Acc.Q02750,P36507.Dual specificity protein kinase which acts as an essential component of the MAP kinase signal transduction pathway. Binding of extracellular ligands such as growth factors, cytokines and hormones to their cell-surface receptors activates RAS and this initiates RAF1 activation. RAF1 then further activates the dual-specificity protein kinases MAP2K1/MEK1 and MAP2K2/MEK2.
Synonyms:	MAPKK1; MEK1; MKK1; PRKMK1



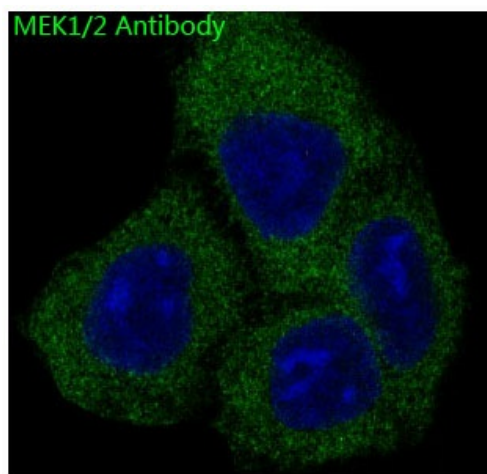
[View online »](#)

Product images:


Western blot analysis of MEK1/2 in (1) 293T lysates; (2) A549 lysates using MEK1/2 antibody.



Immunohistochemistry analysis of paraffin-embedded Human kidney using MEK1/2 antibody. High-pressure and temperature Sodium Citrate pH 6.0 was used for antigen retrieval.



Immunofluorescence analysis of MEK1/2 in Hela using MEK1/2 antibody.