

Product datasheet for **TA384702M**

LC3B (MAP1LC3B) Rabbit Polyclonal Antibody

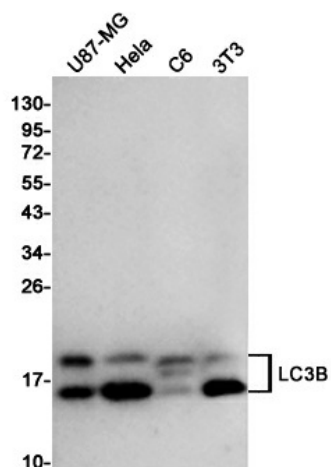
Product data:

Product Type:	Primary Antibodies
Applications:	IF, IP, WB
Recommended Dilution:	WB: 1/1000 ICC/IF: 1/100 IP: 1/50
Reactivity:	Human, Mouse, Rat
Host:	Rabbit
Isotype:	IgG
Clonality:	Polyclonal
Immunogen:	A synthetic peptide of human LC3B
Formulation:	50mM Tris-Glycine(pH 7.4), 0.15M NaCl, 40% Glycerol, 0.01% Sodium azide and 0.05% BSA
Concentration:	lot specific
Purification:	Affinity Purified
Conjugation:	Unconjugated
Storage:	Store at 4°C short term. Aliquot and store at -20°C long term. Avoid freeze/thaw cycles.
Stability:	1 year
Predicted Protein Size:	Calculated MW: 15 kDa; Observed MW: 14.16 kDa
Gene Name:	microtubule associated protein 1 light chain 3 beta
Database Link:	Entrez Gene 81631 Human Q9GZQ8
Background:	Swiss-Prot Acc.Q9GZQ8.
Synonyms:	LC3B; MAP1A/1BLC3; MAP1ALC3



[View online »](#)

Product images:



Western blot analysis of LC3B in U87-MG, HeLa, C6 and 3T3 lysates using LC3B antibody.